



### Explosion proof Telephone

- SMC glass fiber reinforced plastic forged enclosure
- Protection level IP66 according to IEC60529
- Corrosion-resistant hardware
- Advanced noise reduction technology for HD calls
- It is ATEX, IECEx, EAC and INMETRO standards



## MAIN FEATURES

The explosion proof telephone are designed to provide safe, reliable communication in hazardous areas. The telephones sets were developed for operation in the petrochemical industrial, usually used in production, transportation and refining of oil, natural gas, mining and etc. The housing is made of impact and shock-resistant GRP and even resistant to acids, alkali and lubricants. Its robust design represents a perfect “packaging” for the latest requirements for VoIP telephones combined with proven reliability for critical mission communications and high safety applications.

It is designed to provide ultimate user comfort on the basis of industrial standards and decades of market leading expertise and know-how. The telephone device features a display with integrated heating for ultra low temperature environments.

### This mark indicates compliance with the

**Ex eb ib [ib Gb] mb IIC T6/T5 Gb**

**Ex ib [ib Db] tb IIIC T80°C/T95°C Db**

**T6/T80°C: -40°C to +40°C**

**T5/T95°C: -40°C to +55°C**

**Zone 1,2, 22**

- Audio modes—handset and hands-free speaker phone
- Hotline, stainless steel panel without keypad, programmable for auto-dial
- Handset with noise-cancelling microphone and 80 cm armored cord
- The handset supports hearing aid compatibility (HAC)
- Removable handset retainer latches on cradle
- Cradle Switch Life, >1 000 000 times
- Colour optional black, orange, yellow
- Supports wall mounting with mounting bar

## TECHNICAL SPECIFICATIONS

Analog Specification	
Power supply	Drawn from telephone line
Operating voltage	24 VDC to 65 VDC
Operating current	20 mA DC to 100 mA DC
Ringer operating voltage	48 VAC to 90 VAC (calling frequency 21 to 54 Hz)
Ringing volume	80 dB (A) @ 1 meter
Dialing method	PD or DTMF mode can be set via the menu. DTMF mode in accordance with ITU-T recommendation Q.23
Lightning / Transients	Protection meets ITU-T K.21 enhanced levels
Programming	It can be programmed remotely via DTMF tones
Technical Specification	
Compatible with all standard PABX systems	
Remote programming, allows you to manage your network from a central location	
Programmable auto hang-up timer	
Supports automatic dialing with delay after picking up the phone	
Supports scheduled dialing to the central control phone to detect whether the phone is working properly	
Supports the telephone line to power external light fixed on the top(no external power supply needed)	
Can be adapted according to the model of the Analog PABX to support the sequential calling function	
Phone line powered	
Wiring access, 2xM20 cable gland entry points	
Operating temperature -40°C to 65°C / Storage temperature -40°C to 75°C	
M.T.B.F. exceeds 50,000 hours under normal operating conditions	

## OPTIONAL ACCESSORIES



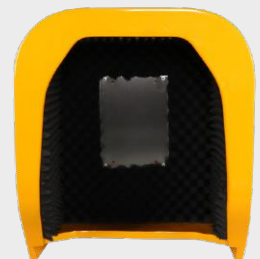
JR-EB-01  
Explosion Proof Beacon



JREX-HSA-A  
Explosion Proof Horn



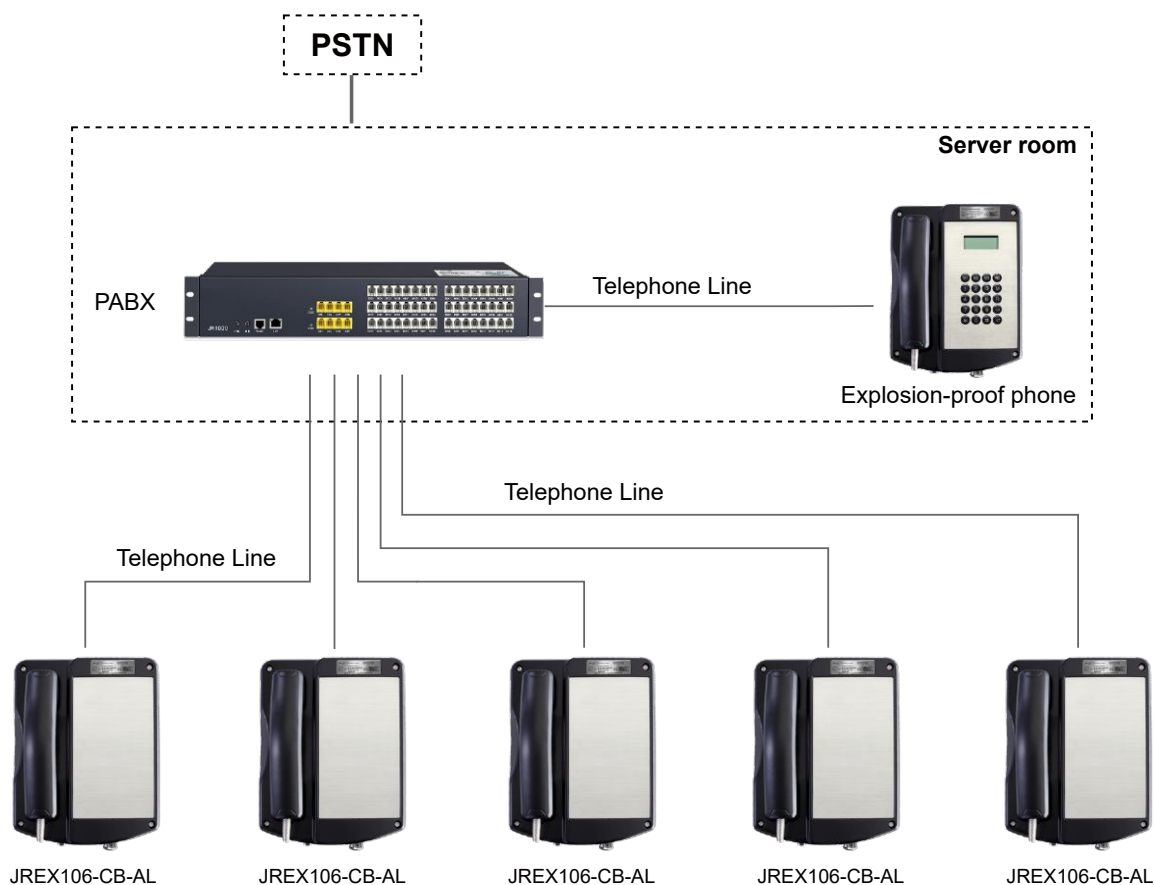
JR-EJB-01  
Explosion Proof Junction Box



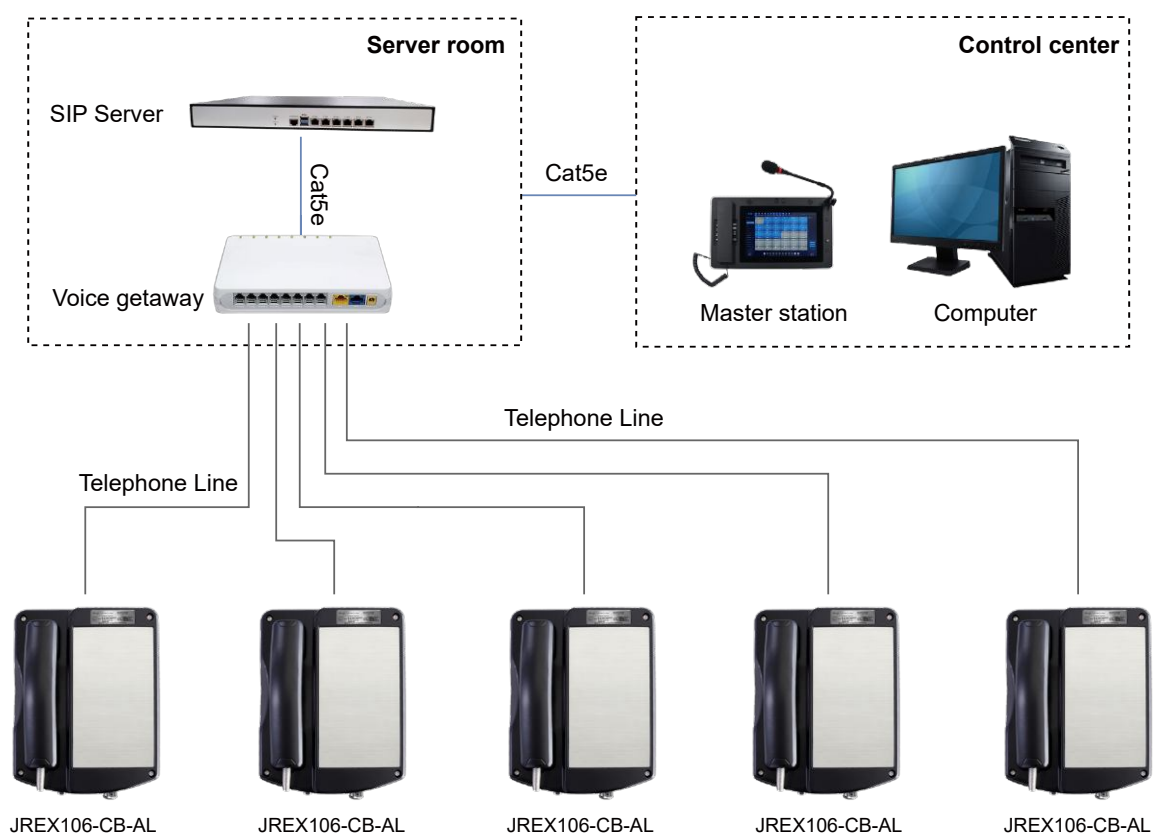
JR-TH-01  
Acoustic hood

## APPLICATIONS

- 1 Analog explosion-proof telephones connect to the PABX and call outside lines through the PSTN.



- 2 Analog explosion-proof telephone connects to voice gateway, converts analog signal to SIP signal, and is applied in SIP-based systems.



## APPLICATION SCENARIOS



Chemical industry



Offshore drilling platform



Oil field



Nuclear power plant



Oil refinery



Mining industry

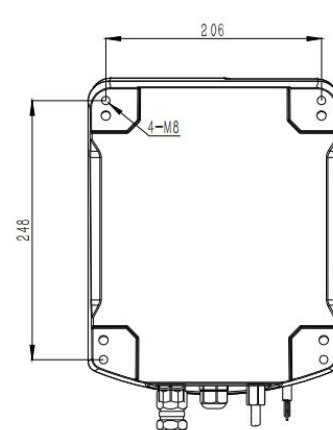
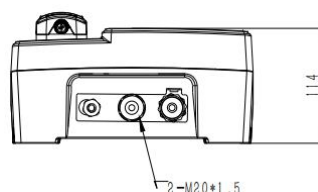
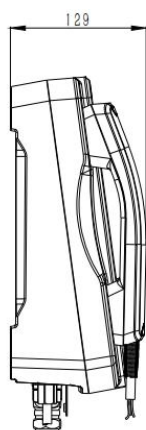
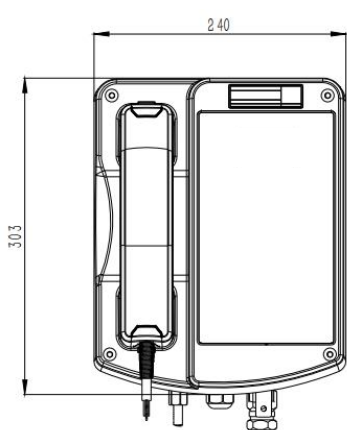


Heavy industry



Metallurgy

## DIMENSIONS



Package	
Unit size	303*240*129 (mm)
Shipping dimensions	405*280*170 (mm)
Packaging materials	Foam padding, carton
Weight	Gross weight: 9 kg / Net weight: 8 kg

