



Explosion proof Telephone

- Aluminum alloy die-casting body
- Protection level IP66 according to IEC60529
- Advanced noise reduction technology for HD calls
- Corrosion-resistant hardware
- It is ATEX, IECEx, EAC and INMETRO standards



MAIN FEATURES

The Explosion Proof Telephone is designed for voice communication in the hostile environment where reliability, efficiency and safety are of prime importance. The telephone can handle the large temperature differences found outdoors, high humidity, exposure to sea water and dust, corrosive atmosphere, explosive gases & particles, as well as mechanical wear and tear, making it perfect for use as an emergency telephone.

The unique robust handset is manufactured from moulded bulk molding compound and designed specifically to withstand arduous use in all environments, armoured cord to provide additional resistance to vandalism or heavy industrial use.

Ideal for chemical plant, oil&gas, onshore and offshore drilling platform, oil refinery, mining, power stations and heavy industry which require very reliable and explosion protection telephony under adverse conditions.

This mark indicates compliance with the:

Ex eb ib [ib Gb] mb IIC T6/T5 Gb

Ex ib [ib Db] tb IIIC T80°C/T95°C Db

T6/T80°C: -40°C to +40°C

T5/T95°C: -40°C to +55°C

Zone 1,2, 22

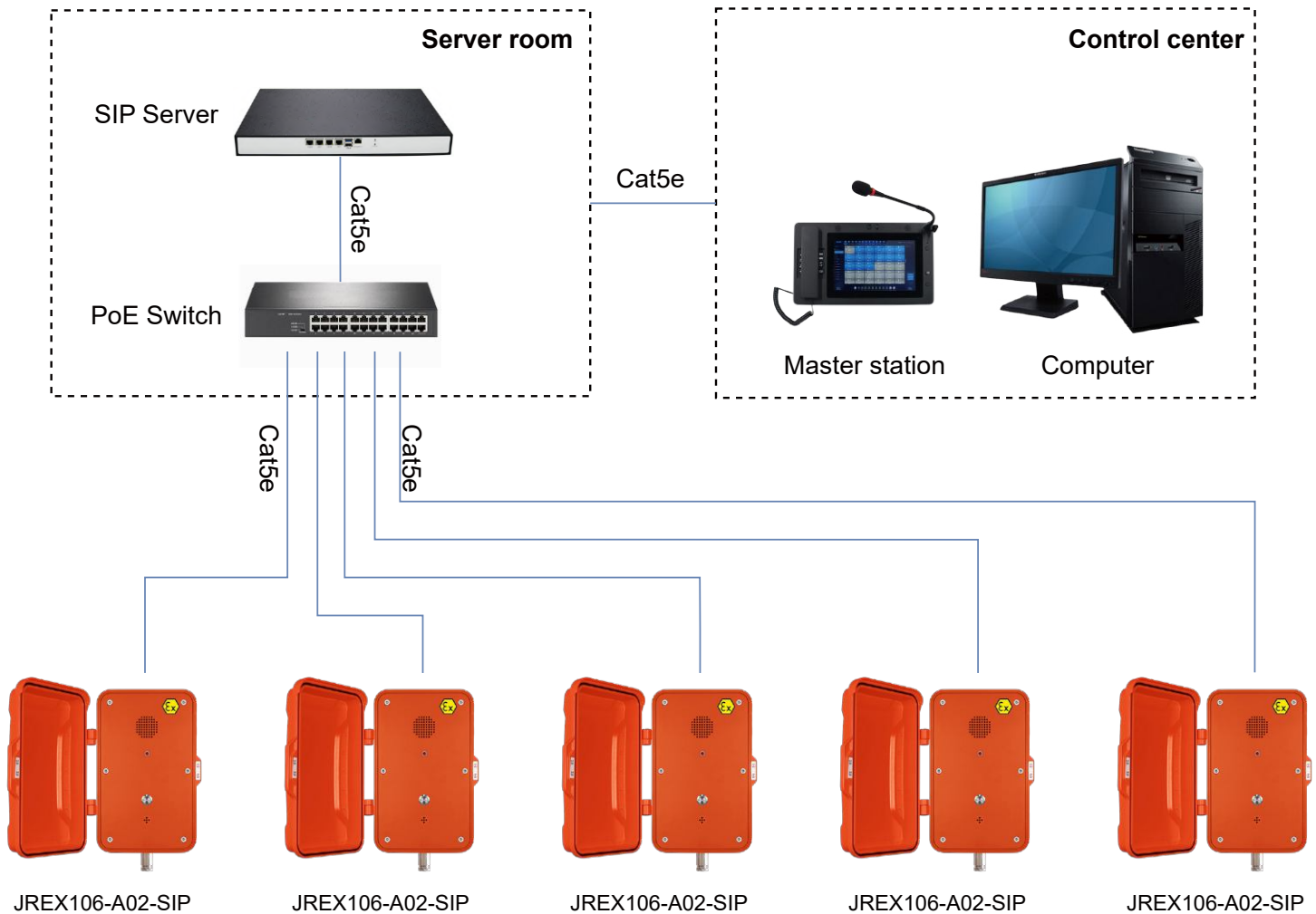
- Hands-free telephone, one vandal resistant metal button for emergency call
- With LED light, blinking when incoming call
- Noise-cancelling microphone
- Built-in 2W speaker
- Magnetic reed hook switch to reduce parts subject to wear
- With door cover, supports wall mounting with mounting bar

TECHNICAL SPECIFICATIONS

| SIP Specifications | |
|---|---|
| Power supply | PoE powered or 12V DC powered |
| Power adapter | 100~240VAC 50~60Hz / 12V DC |
| Power consumption | Idle 1.5W / Working 1.8W |
| SIP protocol | SIP 2.0 (RFC3261) |
| Network port parameters | WAN Port: 10/100Base- T RJ-45 for LAN, Auto MDIX, LAN Port: 10/100Base- T RJ-45 for PC, Auto MDIX |
| Voice coders | G.711 A/U, G.722 8000/16000, G.723, G.729 |
| Communication mode | Full duplex |
| Ringing volume | 90~95 dB (A) @ 1 meter |
| Technical Specifications | |
| Compatible with most SIP-based IP-PBX servers that comply with SIP RFC 3261 | |
| Supports automatic switching between primary and backup servers | |
| Supports remote Telnet debugging | |
| PoE 802.3af enabled (Power-over-Ethernet) or alternate power source | |
| PoE power supply, supports connecting the external loudspeakers (No external power supply needed) | |
| Wiring access, 3xM20 cable gland entry points | |
| Operating temperature -40°C to 65°C / Storage temperature -40°C to 75°C | |
| M.T.B.F. exceeds 50,000 hours under normal operating conditions | |
| Network Web Management | |
| Fully configurable through any internet browser | |
| Static IP address provisioning or DHCP support | |
| Product self-diagnostic testing available through the web interface | |
| Network-adjustable earpiece volume and microphone sensitivity | |
| Firmware upload via web interface | |
| Echo cancellation: Supports G.168, and hands-free can support 96ms | |
| Supports SIP domain, SIP authentication (none, basic, MD5), and DNS name of server | |
| DTMF: SIPINFO, INBAND, RFC2833 | |
| Dials Plan: Flexible dial-up configuration, support hotline | |
| Network Features | |
| Supports static IP address | |
| Supports DHCP to obtain an IP address on WAN port | |
| Supports VLAN | |
| Supports web config | |
| Data Protocols: IPv4, TCP, UDP, ICMP, ARP, DNS and DNS SRV for SIP Signaling | |

APPLICATION

IP telephony system is an efficient and convenient communication solution that uses Internet connection to implement voice calls and other communication services. Compared with traditional telephone system, IP telephone system has higher efficiency and convenience.



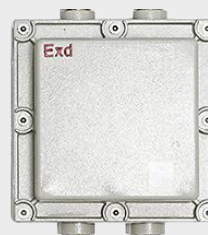
OPTIONAL ACCESSORIES



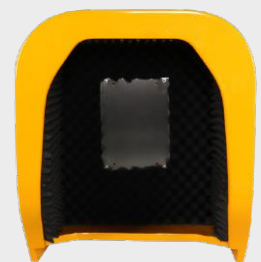
JR-EB-01
Explosion Proof Beacon



JREX-HSA-A
Explosion Proof Horn



JR-EJB-01
Explosion Proof Junction Box



JR-TH-01
Acoustic hood

APPLICATION SCENARIOS



Chemical industry



Offshore drilling platform



Oil field



Nuclear power plant



Oil refinery



Mining industry

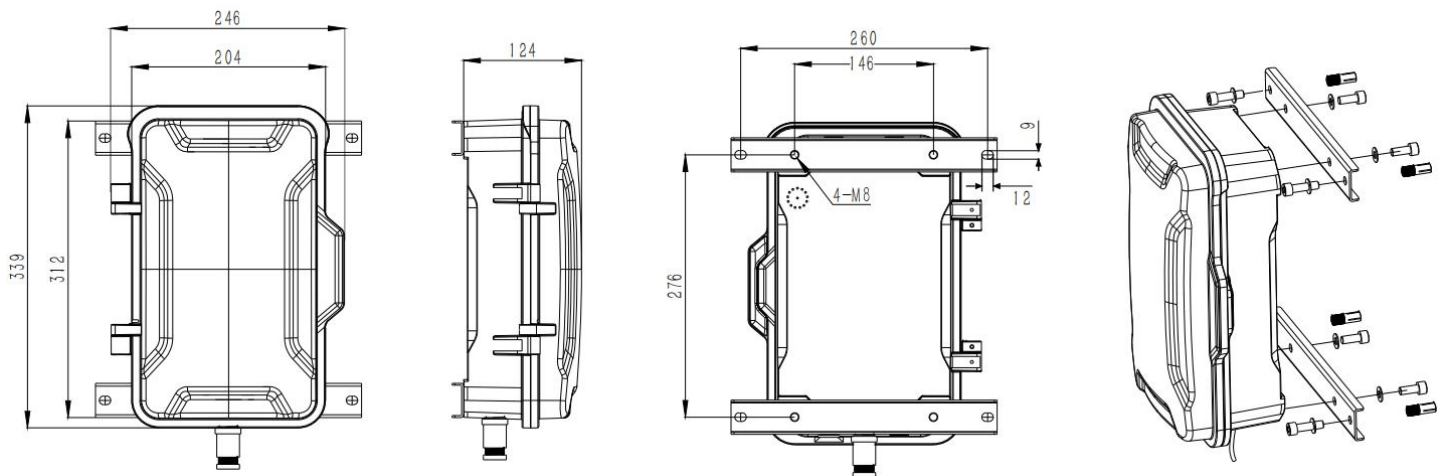


Heavy industry



Metallurgy

DIMENSIONS



| Package | |
|---------------------|---------------------------------------|
| Unit size | 246*339*124 (mm) |
| Shipping dimensions | 200*300*440 (mm) |
| Packaging materials | Foam padding, carton |
| Weight | Gross weight: 8 kg / Net weight: 7 kg |

