



Explosion proof Telephone

- Aluminum alloy die-cast body
- Corrosion-resistant hardware
- Protection level IP66 according to IEC60529
- Advanced noise reduction technology for HD calls
- It is ATEX, IECEx, EAC and INMETRO standards



MAIN FEATURES

The Explosion Proof Telephone is designed for voice communication in the hostile environment where reliability, efficiency and safety are of prime importance. The telephone can handle the large temperature differences found outdoors, high humidity, exposure to sea water and dust, corrosive atmosphere, explosive gases & particles, as well as mechanical wear and tear, making it perfect for use as an emergency telephone.

The unique robust handset is manufactured from moulded bulk molding compound and designed specifically to withstand arduous use in all environments, armoured cord to provide additional resistance to vandalism or heavy industrial use.

Ideal for chemical plant, oil&gas, onshore and offshore drilling platform, oil refinery, mining, power stations and heavy industry which require very reliable and explosion protection telephony under adverse conditions.

This mark indicates compliance with the:

Ex eb ib [ib Gb] mb IIC T6/T5 Gb

Ex ib [ib Db] tb IIIC T80°C/T95°C Db

T6/T80°C: -40°C to +40°C

T5/T95°C: -40°C to +55°C

Zone 1,2, 22

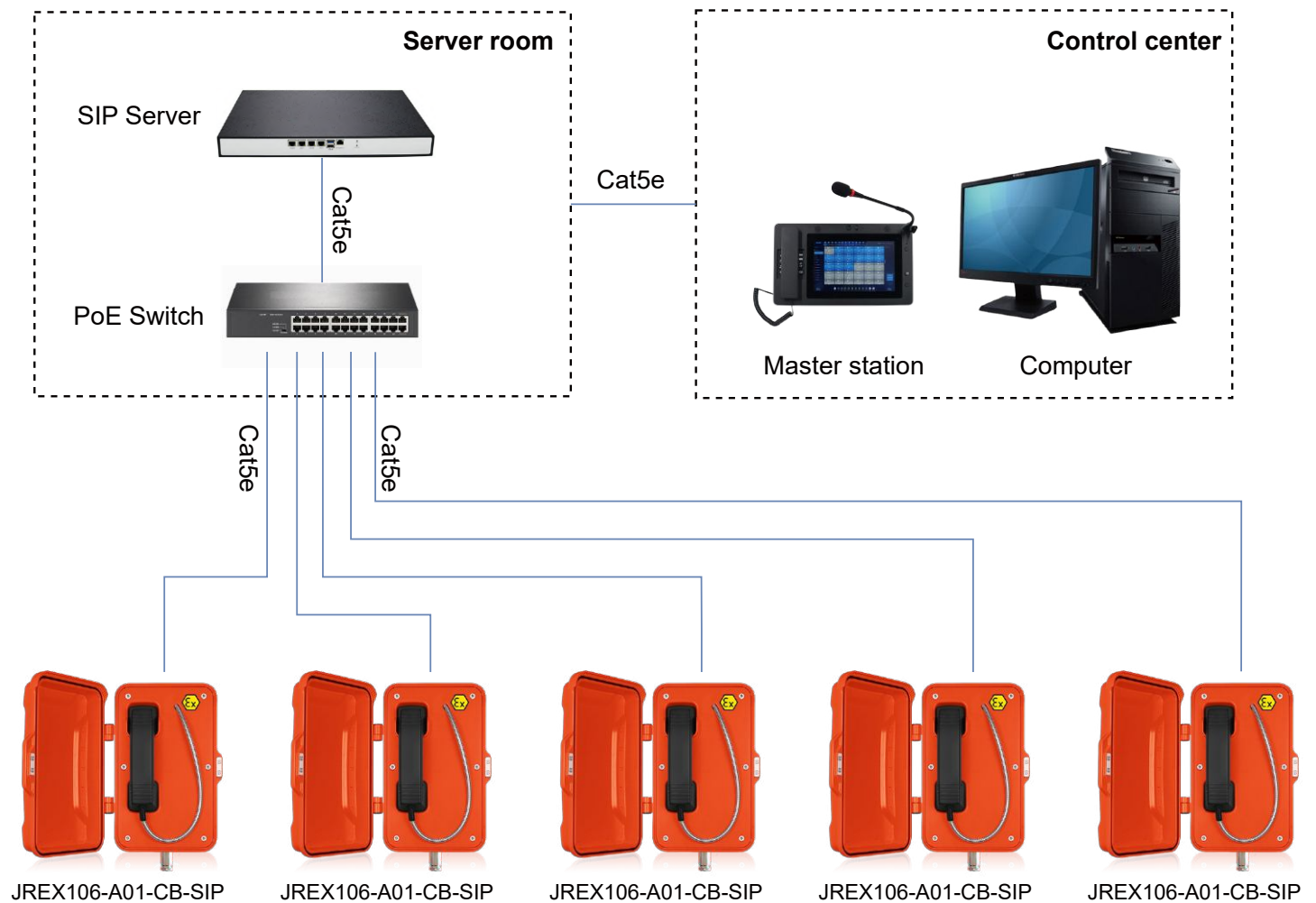
- Hotline telephone without keypad, programmable for auto-dial
- Handset with noise-cancelling microphone and 42 cm armored cord (optional heavy duty curly cord)
- The handset supports hearing aid compatibility (HAC)
- Magnetic reed hook switch to reduce wear-prone parts
- Orange color (other colour on demand)
- With door cover, supports wall mounting with mounting bar

TECHNICAL SPECIFICATIONS

SIP Specifications	
Power supply	PoE powered or 12V DC powered
Power adapter	100~240VAC 50~60Hz / 12V DC
Power consumption	Idle 1.5W / Working 1.8W
SIP protocol	SIP 2.0 (RFC3261)
Network port parameters	WAN Port: 10/100Base- T RJ-45 for LAN, Auto MDIX, LAN Port: 10/100Base- T RJ-45 for PC, Auto MDIX
Voice coders	G.711 A/U, G.722 8000/16000, G.723, G.729
Communication mode	Full duplex
Ringing volume	90~95 dB (A) @ 1 meter
Technical Specifications	
Compatible with most SIP-based IP-PBX servers that comply with SIP RFC 3261	
Supports automatic dialing with delay after picking up the phone, and 4 groups of sequential calling	
Supports automatic switching between primary and backup servers	
Supports remote Telnet debugging	
PoE 802.3af enabled (Power-over-Ethernet) or alternate power source	
PoE power supply, supports connecting the external loudspeakers (No external power supply needed)	
Wiring access, 3xM20 cable gland entry points	
Operating temperature -40°C to 65°C / Storage temperature -40°C to 75°C	
M.T.B.F. exceeds 50,000 hours under normal operating conditions	
Network Web Management	
Fully configurable through any internet browser	
Static IP address provisioning or DHCP support	
Product self-diagnostic testing available through the web interface	
Network-adjustable earpiece volume and microphone sensitivity	
Firmware upload via web interface	
Echo cancellation: Supports G.168, and hands-free can support 96ms	
Supports SIP domain, SIP authentication (none, basic, MD5), and DNS name of server	
DTMF: SIPINFO, INBAND, RFC2833	
Dials Plan: Flexible dial-up configuration, support hotline	
Network Features	
Supports static IP address	
Supports DHCP to obtain an IP adress on WAN port	
Supports VLAN	
Supports web config	
Data Protocols: IPv4, TCP, UDP, ICMP, ARP, DNS and DNS SRV for SIP Signaling	

APPLICATION

IP telephony system is an efficient and convenient communication solution that uses Internet connection to implement voice calls and other communication services. Compared with traditional telephone system, IP telephone system has higher efficiency and convenience.



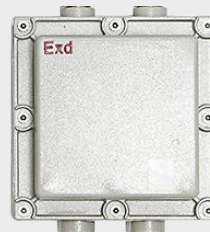
OPTIONAL ACCESSORIES



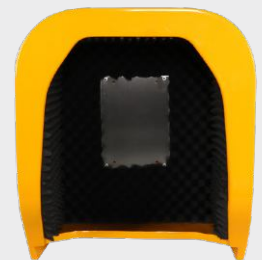
JR-EB-01
Explosion Proof Beacon



JREX-HSA-A
Explosion Proof Horn



JR-EJB-01
Explosion Proof Junction Box



JR-TH-01
Acoustic hood

APPLICATION SCENARIOS



Chemical industry



Offshore drilling platform



Oil field



Nuclear power plant



Oil refinery



Mining industry

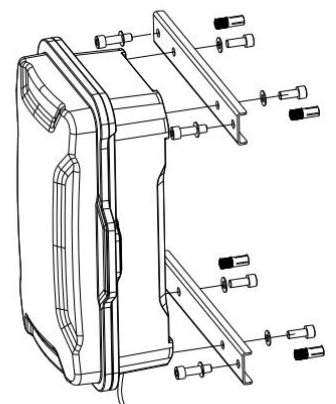
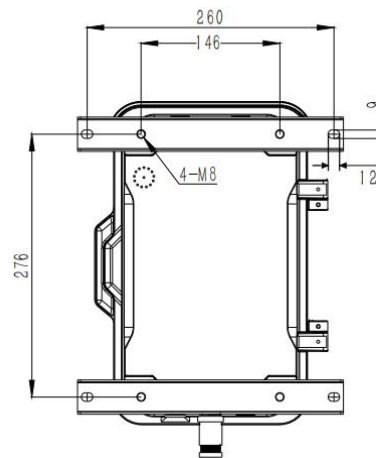
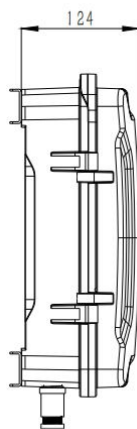
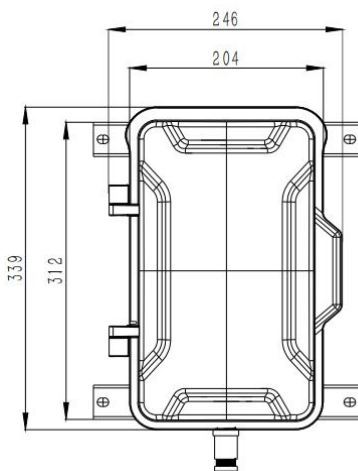


Heavy industry



Metallurgy

DIMENSIONS



Package	
Unit size	246*339*124 (mm)
Shipping dimensions	200*300*440 (mm)
Packaging materials	Foam padding, carton
Weight	Gross weight: 8 kg / Net weight: 7 kg

