



Explosion proof Telephone

- Aluminum alloy die-casting body
- Protection level IP66 according to IEC60529
- Advanced noise reduction technology for HD calls
- Supports 10 groups of speed dialing
- It is ATEX, IECEx, EAC and INMETRO standards



MAIN FEATURES

The Explosion Proof Telephone is designed for voice communication in the hostile environment where reliability, efficiency and safety are of prime importance. The telephone can handle the large temperature differences found outdoors, high humidity, exposure to sea water and dust, corrosive atmosphere, explosive gases & particles, as well as mechanical wear and tear, making it perfect for use as an emergency telephone.

The unique robust handset is manufactured from moulded bulk molding compound and designed specifically to withstand arduous use in all environments, armoured cord to provide additional resistance to vandalism or heavy industrial use.

Ideal for chemical plant, oil&gas, onshore and offshore drilling platform, oil refinery, mining, power stations and heavy industry which require very reliable and explosion protection telephony under adverse conditions.

This mark indicates compliance with the:

Ex eb ib [ib Gb] mb IIC T6/T5 Gb

Ex ib [ib Db] tb IIIC T80°C/T95°C Db

T6/T80°C: -40°C to +40°C

T5/T95°C: -40°C to +55°C

Zone 1,2, 22

- Full rubber keypad with memory, 0-9 buttons can be programmed as speed dial buttons
- "M" for muting
- "R" for flash recall
- "LR" button for last number redial
- Handset with noise-cancelling microphone and 42 cm armored cord (optional heavy duty curly cord)
- The handset supports hearing aid compatibility (HAC)
- Magnetic reed hook switch to reduce wear-prone parts
- With door cover, supports wall mounting with mounting bar

TECHNICAL SPECIFICATIONS

Analog Specification	
Power supply	Drawn from telephone line
Operating voltage	24 VDC to 65 VDC
Operating current	20 mA DC to 100 mA DC
Ringer operating voltage	48 VAC to 90 VAC (calling frequency 21 to 54 Hz)
Ringing volume	80 dB (A) @ 1 meter
Dialing method	PD or DTMF mode can be set via the menu. DTMF mode in accordance with ITU-T recommendation Q.23
Lightning / Transients	Protection meets ITU-T K.21 enhanced levels
Programming	It can be programmed remotely via DTMF tones or the keypad
Technical Specifications	
Compatible with all standard PABX systems	
Remote programming, allows you to manage your network from a central location	
Programmable auto hang-up timer	
Supports automatic dialing with delay after picking up the phone	
Supports scheduled dialing to the central control phone to detect whether the phone is working properly	
Supports the telephone line to power external light fixed on the top(no external power supply needed)	
Supports MIC mute function	
Supports call transfer	
Can be adapted according to the model of the Analog PABX to support the sequential calling function	
Phone line powered	
Wiring access, 3xM20 cable gland entry points	
Operating temperature -40°C to 65°C / Storage temperature -40°C to 75°C	
M.T.B.F. exceeds 50,000 hours under normal operating conditions	

OPTIONAL ACCESSORIES



JR-EB-01

Explosion Proof Beacon



JREX-HSA-A

Explosion Proof Horn



JR-EJB-01

Explosion Proof Junction Box

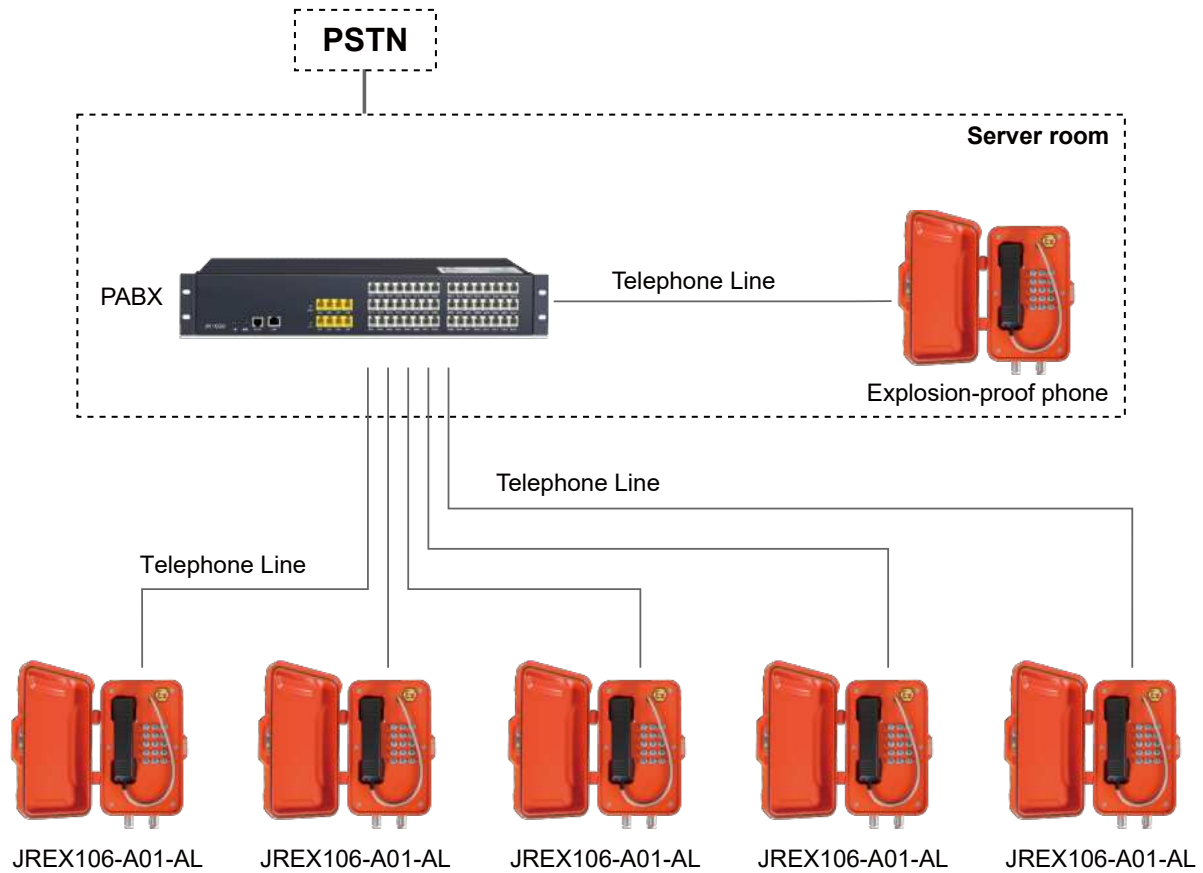


JR-TH-01

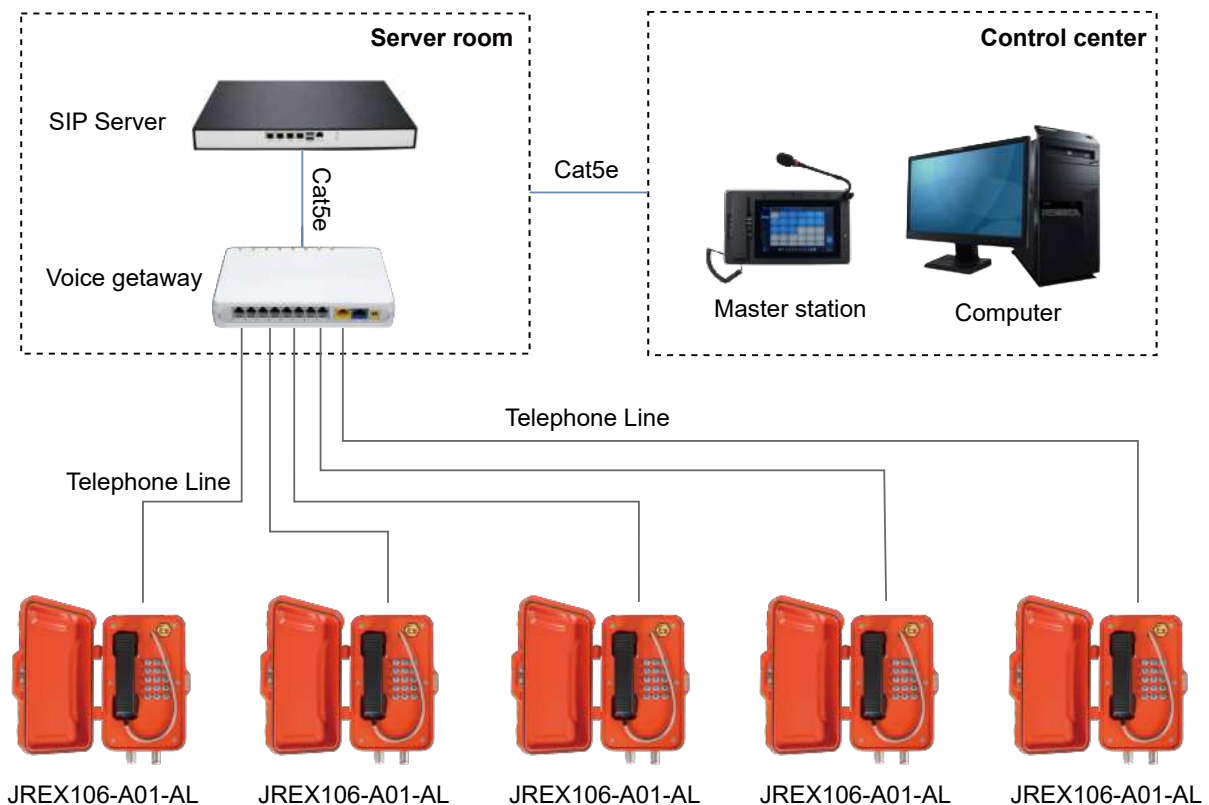
Acoustic Hood

APPLICATIONS

- 1 Analog explosion-proof telephones connect to the PABX and call outside lines through the PSTN.



- 2 Analog explosion-proof telephone connects to voice gateway, converts analog signal to SIP signal, and is applied in SIP-based systems.



APPLICATION SCENARIOS



Chemical industry



Offshore drilling platform



Oil field



Nuclear power plant



Oil refinery



Mining industry

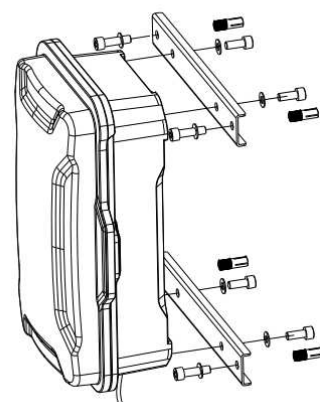
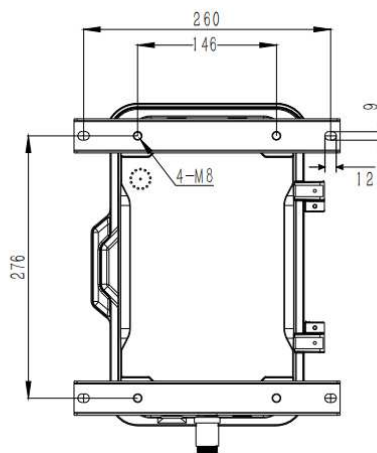
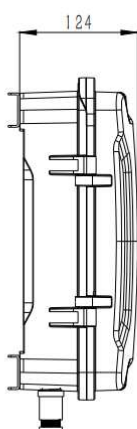
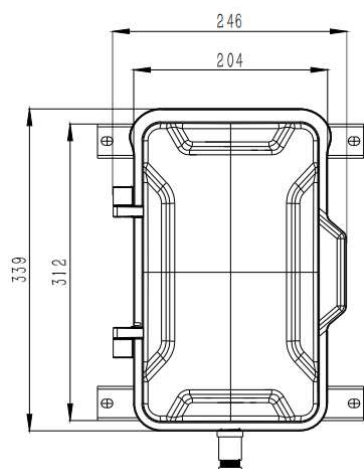


Heavy industry



Metallurgy

DIMENSIONS



Package	
Unit size	246*339*124 (mm)
Shipping dimensions	200*300*440 (mm)
Packaging materials	Foam padding, carton
Weight	Gross weight: 8 kg / Net weight: 7 kg

