



Emergency Intercom

- Robust cold-rolled steel housing, stainless steel panel
- IP55-IP65 Waterproof rating
- Advanced noise reduction technology for HD calls
- Corrosion-resistant hardware
- CE, FCC, RoHS, IK10, IP65, ISO9001 standards

IP65



IK10

HD

MAIN FEATURES

Housed in cold rolled steel box and manufactured to high standards, these telephones offer enhanced resistance to vandalism and ensure reliable communication at all times.

The LED Light continuously flashes when the emergency telephone rings and remains on during a call if the duration of a call when the EMERGENCY button is pressed to draw attention to the unit. The LED light turns off when the system is in standby mode.

The emergency roadside telephone is designed for highways and high-risk areas such as campuses. It features one-button push-totalk functionality, with a blue light that flashes to attract attention. The device is waterproof (IP55-IP66 rated) and suitable for outdoor use, supporting wide-area audio broadcasts.

- Hands-free operation with a single vandal-resistant metal button for emergency calls
- Equipped with an LED lamp on top that blinks during incoming calls
- Noise-cancelling microphone
- Built-in 2W speaker
- Blue color (other colors available on request)
- On wall-mounted design, 4 X Tamper proof screws for mounting

TECHNICAL SPECIFICATIONS

Analog Specification	
Power supply	Drawn from telephone line
Operating voltage	24 VDC to 65 VDC
Operating current	20 mA DC to 100 mA DC
Ringer operating voltage	48 VAC to 90 VAC (calling frequency 21 to 54 Hz)
Ringing volume	80 dB (A) @ 1 meter
Dialing method	PD or DTMF mode can be set via the menu. DTMF mode in accordance with ITU-T recommendation Q.23
Lightning / Transients	Protection to ITU-T K.21 enhanced levels
Programming	It can be programmed remotely via DTMF tones or the keypad
Technical Specifications	
Compatible with all the standard PABX systems	
Remote programming allows you to manage your network from a central location	
Programmable auto hang-up timer	
Supports scheduled dialing to the central control phone to detect whether the phone is working properly	
Supports one relay to remotely control external devices	
Can be adapted according to the model of the Analog PABX to support the sequential calling function	
Phone line powered	
Operating temperature -40°C to 65°C / Storage temperature -40°C to 75°C	
M.T.B.F. exceeds 50,000 hours under normal operating conditions	

OPTIONAL ACCESSORIES



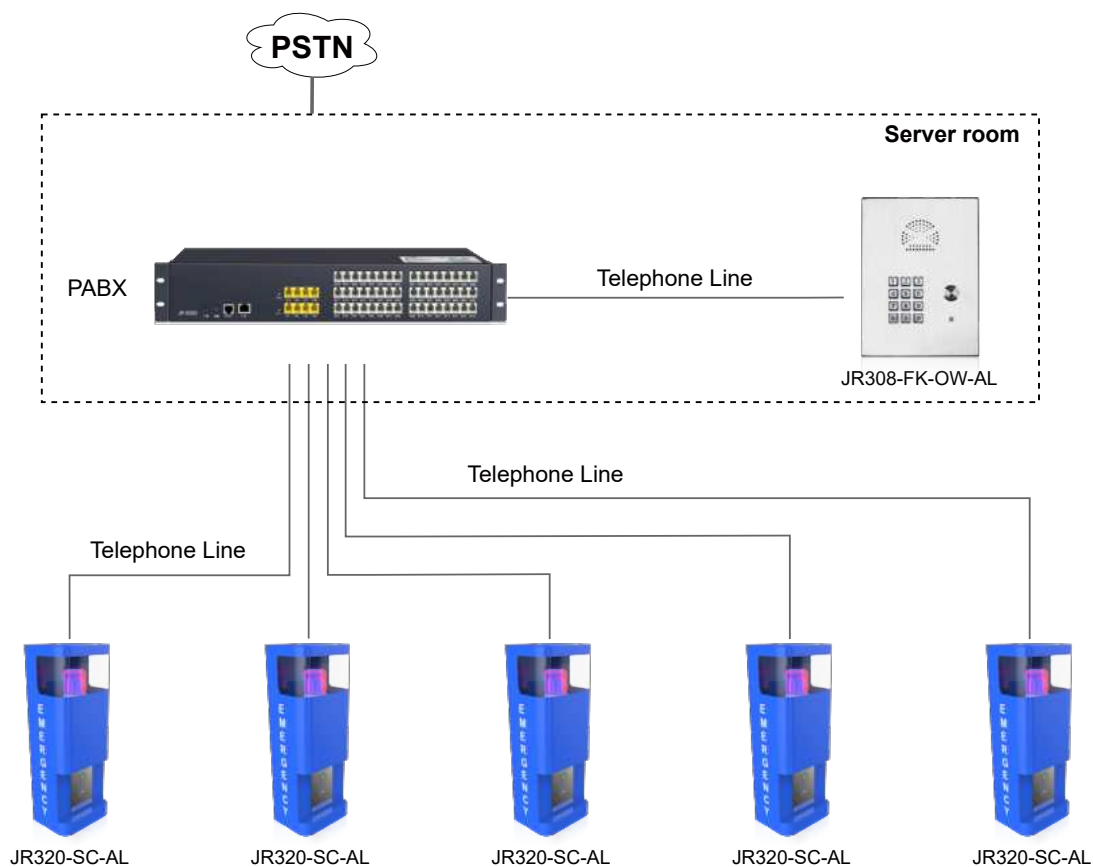
Button
Multiple Options Available



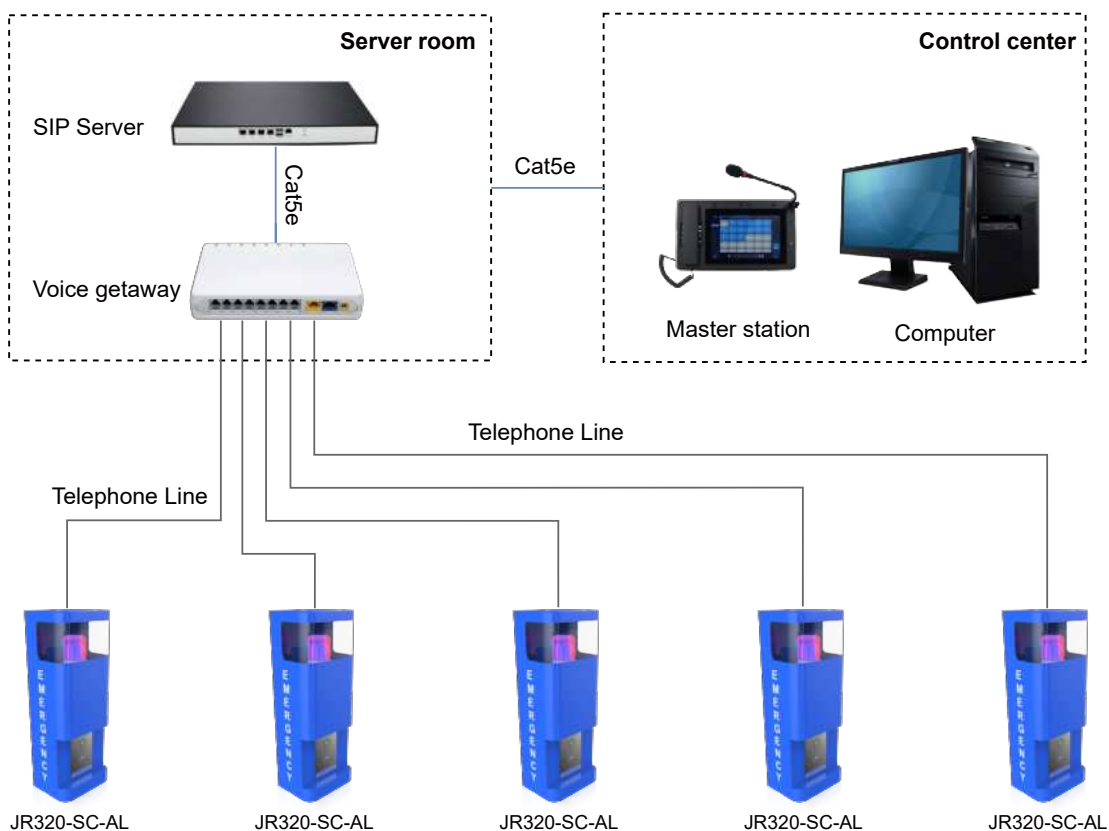
JR-HSA-10/20/25/30/35
Broadcast Horn

APPLICATIONS

- 1 Analog telephone connects to the PABX and call outside lines through the PSTN.



- 2 Analog telephone connects to voice gateway, converts analog signal to SIP signal, and is applied in SIP-based systems.



APPLICATION SCENARIOS



Metro



Airport



Platform



Business center



Highway / Tunnel



Railway

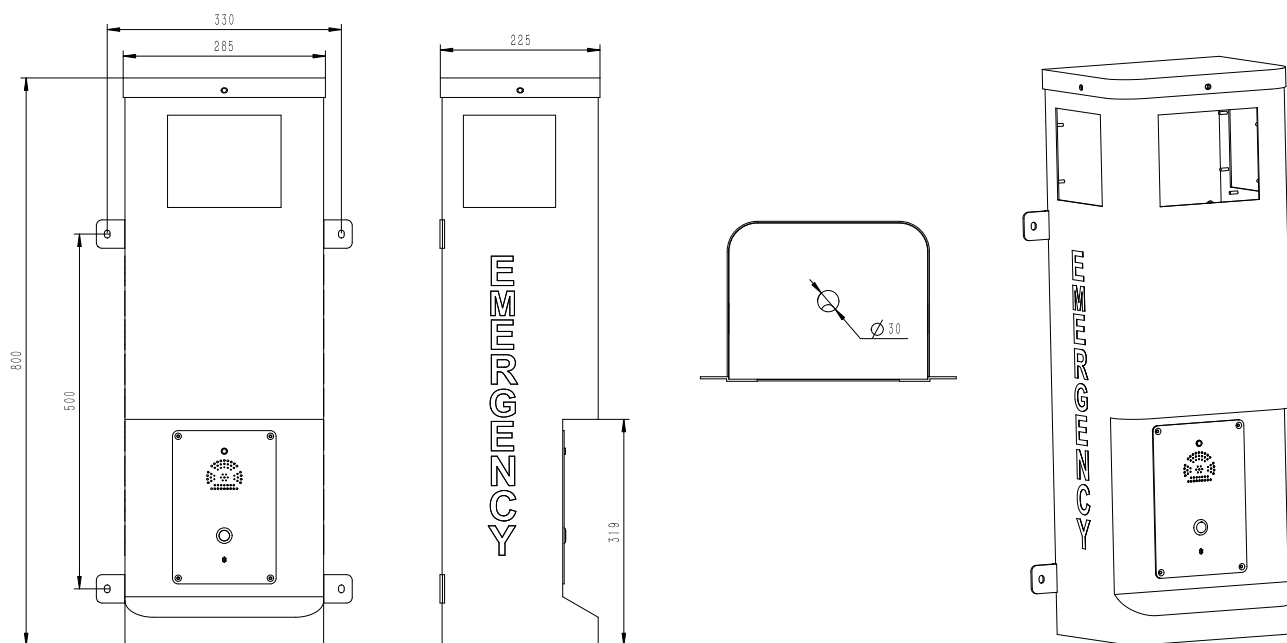


Hospital



School

DIMENSIONS



Package	
Unit size	800*285*225 (mm)
Shipping dimensions	850*330*250 (mm)
Packaging materials	Foam padding, carton
Weight	Gross weight: 15 kg / Net weight: 12 kg

