

Emergency Intercom

- 304 Stainless Steel body (SS316 available upon request)
- IP55-IP65 Waterproof rating
- Advanced noise reduction technology for HD calls
- Corrosion-resistant hardware
- CE, FCC, RoHS, IK10, IP65, ISO9001 standards

IP65



IK10

HD

MAIN FEATURES

Housed in stainless steel with a wire-drawing finish and manufactured to high standards, these telephones offer enhanced resistance to vandalism and ensure reliable communication at all times.

Additionally, this series of phones has been tested in salt spray and is highly durable in humid and corrosive environments. Extremely easy to install, the cable entrance is located at the back of the phone to prevent artificial damage.

Ideal for parking lots, lifts/elevators, hotels, doorways, railway/metro platforms, hospitals, police stations, ATMs, stadiums, and outdoor building etc.

- Hands-free operation with a single vandal-resistant metal button for emergency calls
- Full metal keypad (12keys)
- Noise-cancelling microphone
- Built-in 2W speaker
- On wall-mounted design, with an M16 cable gland on the bottom shell

TECHNICAL SPECIFICATIONS

| Analog Specification | |
|---|---|
| Power supply | Drawn from telephone line |
| Operating voltage | 24 VDC to 65 VDC |
| Operating current | 20 mA DC to 100 mA DC |
| Ringer operating voltage | 48 VAC to 90 VAC (calling frequency 21 to 54 Hz) |
| Ringing volume | 80 dB (A) @ 1 meter |
| Dialing method | PD or DTMF mode can be set via the menu. DTMF mode in accordance with ITU-T recommendation Q.23 |
| Lightning / Transients | Protection to ITU-T K.21 enhanced levels |
| Programming | It can be programmed remotely via DTMF tones or the keypad |
| Technical Specifications | |
| Compatible with all the standard PABX systems | |
| Remote programming allows you to manage your network from a central location | |
| Programmable auto hang-up timer | |
| Supports scheduled dialing to the central control phone to detect whether the phone is working properly | |
| Supports one relay to remotely control external devices | |
| Can be adapted according to the model of the Analog PABX to support the sequential calling function | |
| Phone line powered | |
| Operating temperature -40°C to 65°C / Storage temperature -40°C to 75°C | |
| M.T.B.F. exceeds 50,000 hours under normal operating conditions | |

OPTIONAL ACCESSORIES



Button
Multiple Options Available



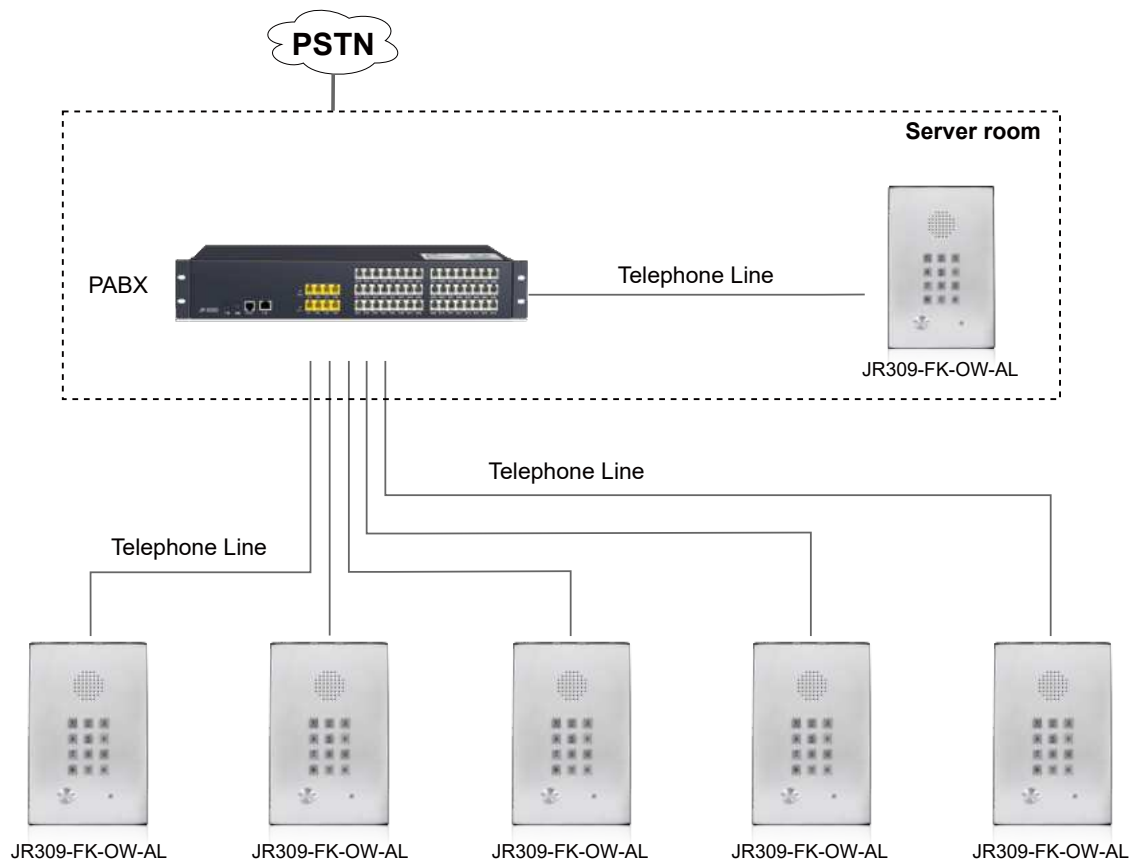
JR-LP-02
LED Beacon Light



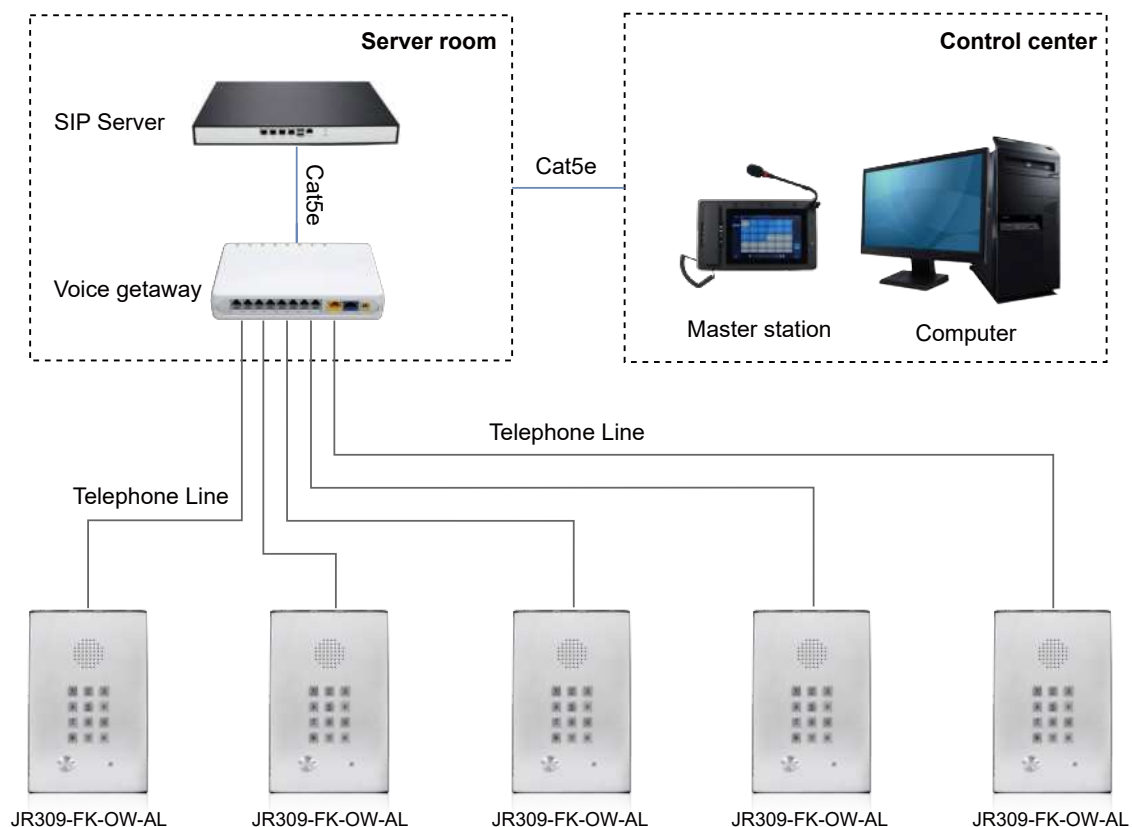
JR-HSA-10/20/25/30/35
Broadcast Horn

APPLICATIONS

- 1 Analog telephone connects to the PABX and call outside lines through the PSTN.



- 2 Analog telephone connects to voice gateway, converts analog signal to SIP signal, and is applied in SIP-based systems.



APPLICATION SCENARIOS



Metro



Airport



Platform



Business center



Clean room



Hospital

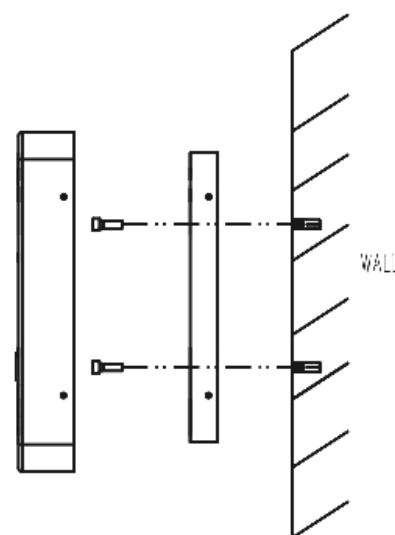
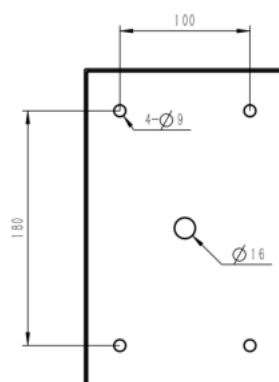
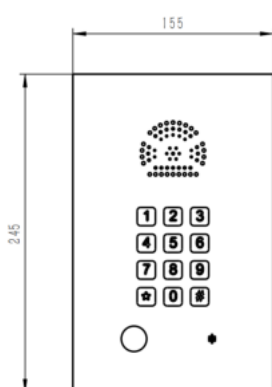


Bank



School

DIMENSIONS



| Package | |
|---------------------|---|
| Unit size | 245*155*50 (mm) |
| Shipping dimensions | 340*235*165 (mm) |
| Packaging materials | Foam padding, carton |
| Weight | Gross weight: 3 kg / Net weight: 2.5 kg |

