



### Emergency Intercom

- Robust cold-rolled steel housing, stainless steel panel
- IP55-IP65 Waterproof rating
- Advanced noise reduction technology for HD calls
- Corrosion-resistant hardware
- CE, FCC, RoHS, IK10, IP65, ISO9001 standards

IP65



IK10

HD

## MAIN FEATURES

Housed in stainless steel with a wire-drawing finish and manufactured to high standards, these telephones offer enhanced resistance to vandalism and ensure reliable communication at all times.

Additionally, this series of phones has been tested in salt spray and is highly durable in humid and corrosive environments. Extremely easy to install, the cable entrance is located at the back of the phone to prevent artificial damage.

Ideal for parking lots, lifts/elevators, hotels, doorways, railway/metro platforms, hospitals, police stations, ATMs, stadiums, and outdoor building etc.

- 4G wireless communication with remote configuration
- Hands-free operation with a single vandal-resistant metal button for emergency calls
- Equipped with an LED light that blinks during incoming calls
- Noise-cancelling microphone
- Built-in 2W speaker
- On wall-mounted design, with an M16 cable gland on the bottom shell

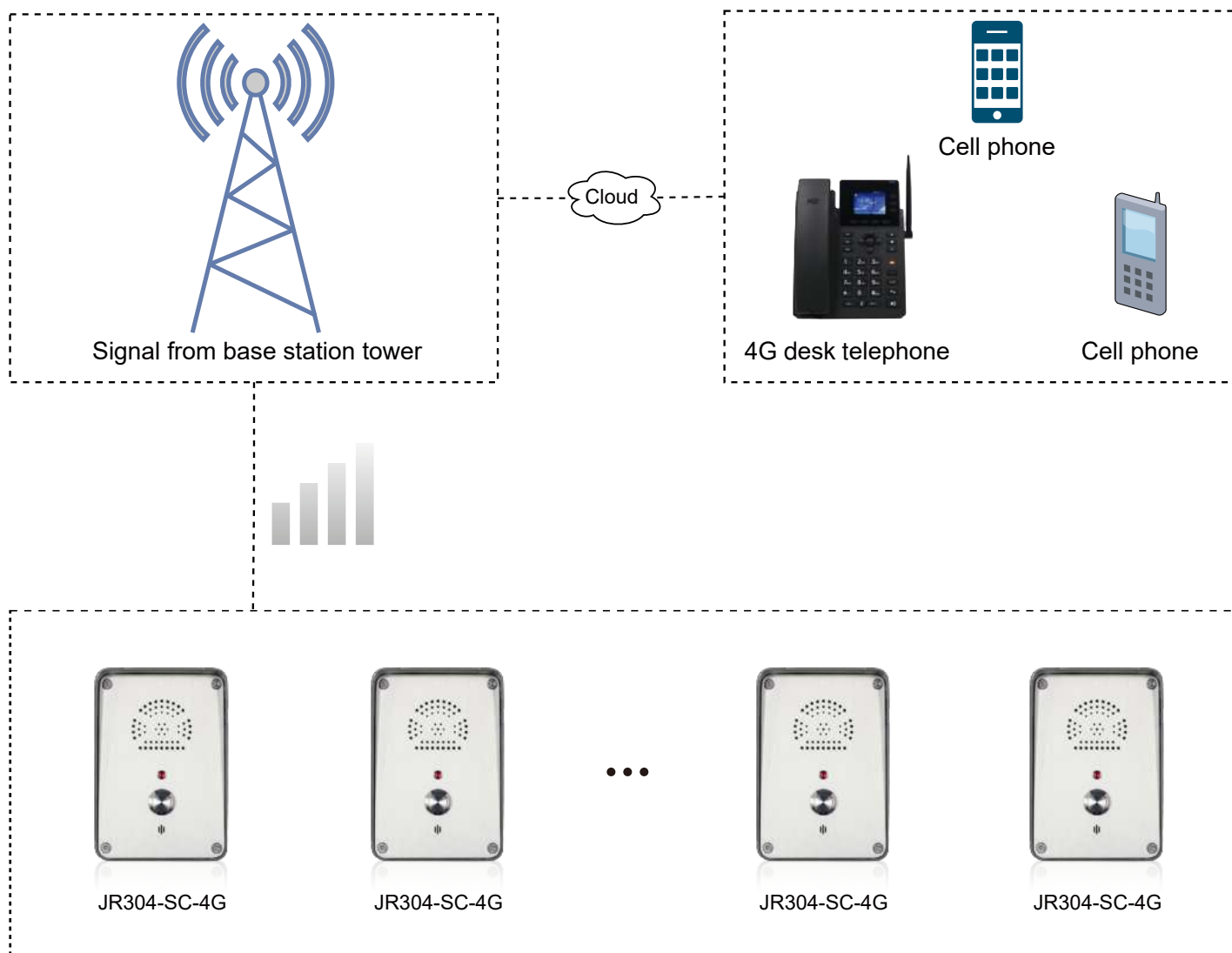
## TECHNICAL SPECIFICATIONS

4G Specifications	
Power supply	12V DC
Adapter input	7.4 V-12V DC
Power consumption	Idle 0.3W / Working 1.5W
Communication mode	4G
Working frequency	Depends on modules
Ringing tone	90 dB (A) @ 1 meter
Configuration method	Remote configuration via SMS, allows management from a central location
Configuration	Remote monitoring / Auto-dial numbers
Time out	Enforces a fixed call maximum time limit of 6-8 minutes from off-hook, configurably
Diagnostic function	Low battery voltage, weak signal, speaker volume, microphone volume can be reported via message
Antenna	Quad-band SMA male, externally mounted with 2 m cable
Environment temperature	Operating temperature -40°C to 65°C; Storage temperature -40°C to 75°C
M.T.B.F.	Exceeds 50,000 hours under normal operating conditions

4G Module EC25				
Module	EC25-E	EC25-EU / EUX	EC25-J	EC25-V
Region	EMEA/Korea/Thailand/India	EMEA/Thailand	Japanese	America Verizon
Frequency				
LTE-FDD	B1/B3/B5/B7/B8/B20	B1/B3/B7/B8/B20/B28A	B1/B3/B8/B18/B19/B26	B4/B13
LTE-TDD	B38/B40/B41	B38/B40/B41	B41	/
WCDMA	B38/B40/B41	B1/B8	B1/B6/B8/B19	/
GSM/EDGE	B3/B8	B3/B8	/	/
GNSS	GPS/GLONASS/BeiDou (Compass)/Galileo/QZSS (option)	GPS/GLONASS/BeiDou (Compass)/Galileo/QZSS (option)	GPS/GLONASS/BeiDou (Compass)/Galileo/QZSS (option)	GPS/GLONASS/BeiDou (Compass)/Galileo/QZSS (option)
Module	EC25-A	EC25-AF / AFX / AFXD (Data-only)	EC25-AUX	EC25-MX
Region	North America	North America	Latin America/Australia/New Zealand	Mexico
Frequency				
LTE-FDD	B2/B4/B12	B2/B4/B5/B12/B13/B14/B66/B71	B1/ B2 <sup>(1)</sup> /B3/B4/B5/B7/B8/B28	B2/B4/B5/B7/B28/B66
LTE-TDD	/	/	B40	/
WCDMA	B2/B4/B5	B2/B4/B5	B1/B2/B4/B5/B8	B2/B4/B5
GSM/EDGE	/	/	B2/B3/B5/B8	/
GNSS	GPS/GLONASS/BeiDou (Compass)/Galileo/QZSS (option)	GPS/GLONASS/BeiDou (Compass)/Galileo/QZSS (option)	GPS/GLONASS/BeiDou (Compass)/Galileo/QZSS (option)	/

## APPLICATIONS

Insert the SIM card into the 4G phone and connect to the operator's network to make calls



## OPTIONAL ACCESSORIES



Button  
Multiple Options Available



JR-LP-02  
LED Beacon Light



JR-HSA-10/20/25/30/35  
Broadcast Horn

## APPLICATION SCENARIOS



Metro



Airport



Platform



Business center



Clean room



Hospital

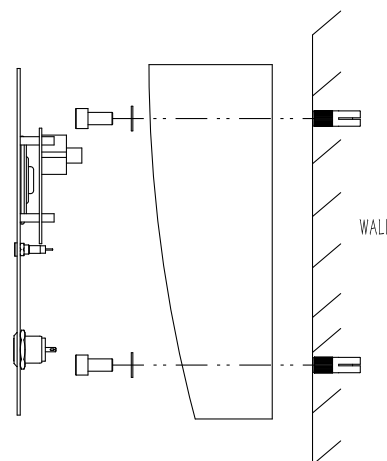
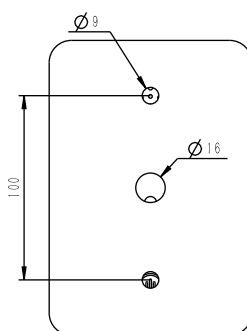
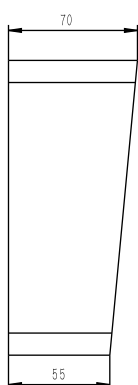
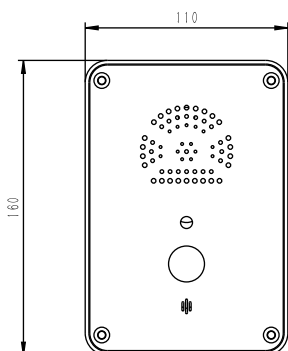


Bank



School

## DIMENSIONS



Package	
Unit size	160*110*70 (mm)
Shipping dimensions	340*235*165 (mm)
Packaging materials	Foam padding, carton
Weight	Gross weight: 2 kg / Net weight: 1.5 kg

