



Vandal Resistant Telephone

- Robust cold-rolled steel housing, stainless steel call panel
- Protection level IP65
- Advanced noise reduction technology for HD calls
- Corrosion-resistant hardware
- CE, FCC, RoHS, IK10, IP65, ISO9001 standards

IP65



IK10

HD

MAIN FEATURES

Housed in a corrosion-resistant stainless steel call panel and cold-rolled steel back shell and manufactured to a high standard, these telephones offer increased resistance to vandalism, and ensure that the primary function of communication is maintained at all times.

Housing has a grounding device and is completely electrically isolated from the internal circuit, with a certain electromagnetic shielding effect, and the voice is clear and loud during the call, without whistling back. Armored "cord" provides additional resistance to vandalism or heavy industrial use.

The series telephones are designed to meet the needs of clients who experience losses due to vandalism. Ideal for parking lots, prisons, airports, railway, metro, ATMs machines, platforms, hospitals, police stations, shopping mall, stadiums, etc.

- 4G wireless communication with remote configuration
- Hotline telephone without keypad
- Silk screen logo on both sides of the phone
- ABS material handset with noise-cancelling microphone and 83 cm armored cord
- The handset supports hearing aid compatibility (HAC)
- Magnetic reed hook-switch
- Red; other colors available upon special request
- Wall-mounted design, simple installation

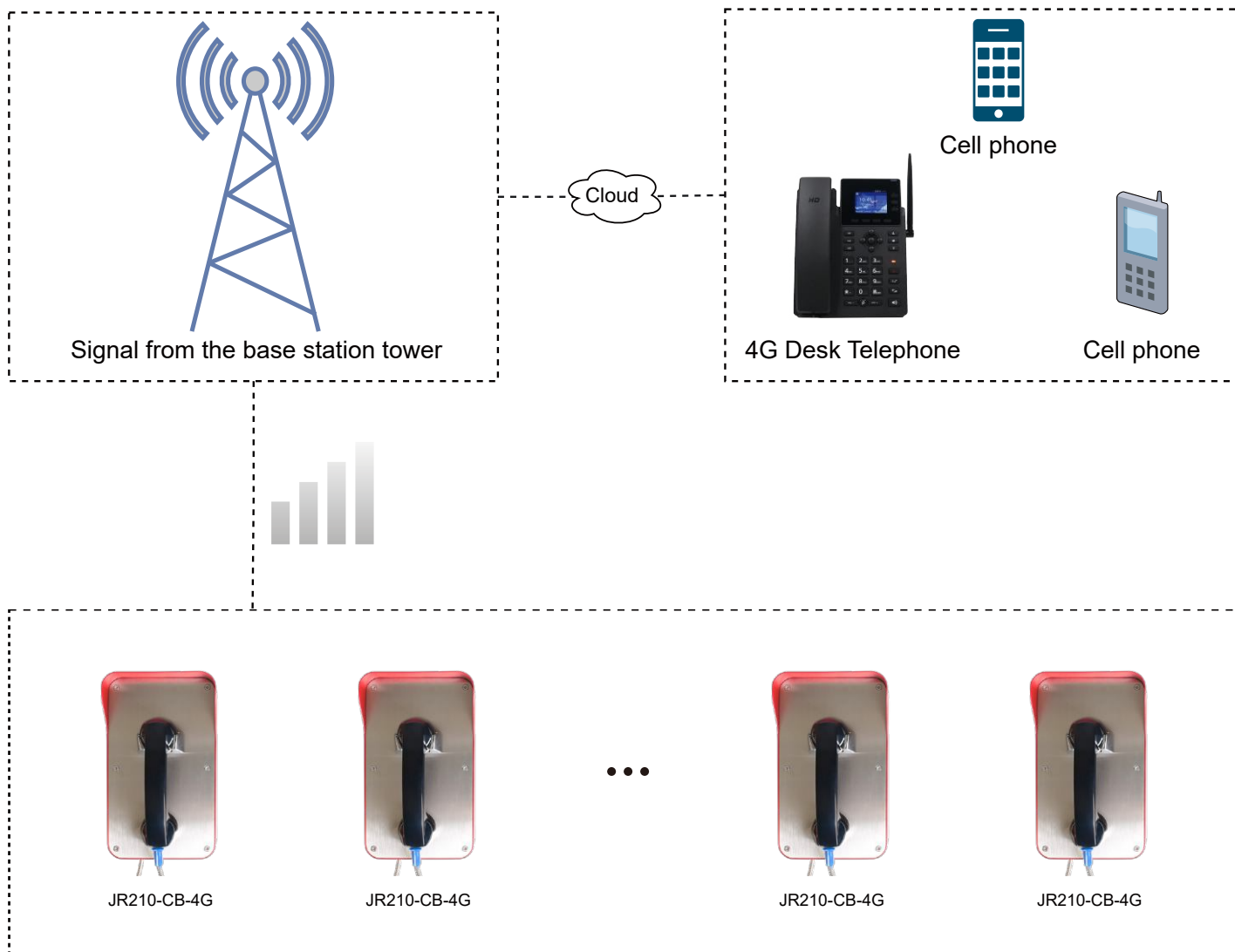
TECHNICAL SPECIFICATIONS

4G Specifications	
Power supply	12V DC
Adapter input	7.4 V-12V DC
Power consumption	Idle 0.3W / Working 1.5W
Communication mode	4G
Working frequency	Depends on modules
Ringing tone	90 dB (A) @ 1 meter
Configuration method	Remote configuration via SMS, allows management from a central location
Configuration	Remote monitoring / Auto-dial numbers
Time out	Enforces a fixed call maximum time limit of 6-8 minutes from off-hook, configurably
Diagnostic function	Low battery voltage, weak signal, speaker volume, microphone volume can be reported via message
Antenna	Quad-band SMA male, externally mounted with 2 m cable
Environment temperature	Operating temperature -40°C to 65°C; Storage temperature -40°C to 75°C
M.T.B.F.	Exceeds 50,000 hours under normal operating conditions

4G Module EC25				
Module	EC25-E	EC25-EU / EUX	EC25-J	EC25-V
Region	EMEA/Korea/Thailand/India	EMEA/Thailand	Japanese	America Verizon
Frequency				
LTE-FDD	B1/B3/B5/B7/B8/B20	B1/B3/B7/B8/B20/B28A	B1/B3/B8/B18/B19/B26	B4/B13
LTE-TDD	B38/B40/B41	B38/B40/B41	B41	/
WCDMA	B38/B40/B41	B1/B8	B1/B6/B8/B19	/
GSM/EDGE	B3/B8	B3/B8	/	/
GNSS	GPS/GLONASS/BeiDou (Compass)/Galileo/QZSS (option)	GPS/GLONASS/BeiDou (Compass)/Galileo/QZSS (option)	GPS/GLONASS/BeiDou (Compass)/Galileo/QZSS (option)	GPS/GLONASS/BeiDou (Compass)/Galileo/QZSS (option)
Module	EC25-A	EC25-AF / AFX / AFXD (Data-only)	EC25-AUX	EC25-MX
Region	North America	North America	Latin America/Australia/New Zealand	Mexico
Frequency				
LTE-FDD	B2/B4/B12	B2/B4/B5/B12/B13/B14/B66/B71	B1/ B2 ^① /B3/B4/B5/B7/B8/B28	B2/B4/B5/B7/B28/B66
LTE-TDD	/	/	B40	/
WCDMA	B2/B4/B5	B2/B4/B5	B1/B2/B4/B5/B8	B2/B4/B5
GSM/EDGE	/	/	B2/B3/B5/B8	/
GNSS	GPS/GLONASS/BeiDou (Compass)/Galileo/QZSS (option)	GPS/GLONASS/BeiDou (Compass)/Galileo/QZSS (option)	GPS/GLONASS/BeiDou (Compass)/Galileo/QZSS (option)	/

APPLICATIONS

Insert the SIM card into the 4G phone and connect to the operator's network to make calls



OPTIONAL ACCESSORIES



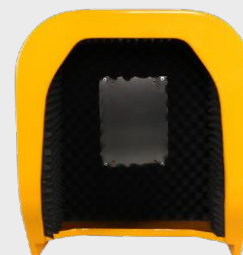
JR-LP-01
LED Light



JR-LP-02
LED Beacon Light



JR-HSA-10/20/25/30/35
Broadcast Horn



JR-TH-01
Acoustic Hood

APPLICATION SCENARIOS



Metro



Airport



Bus station



Business center



Prison



Hospital

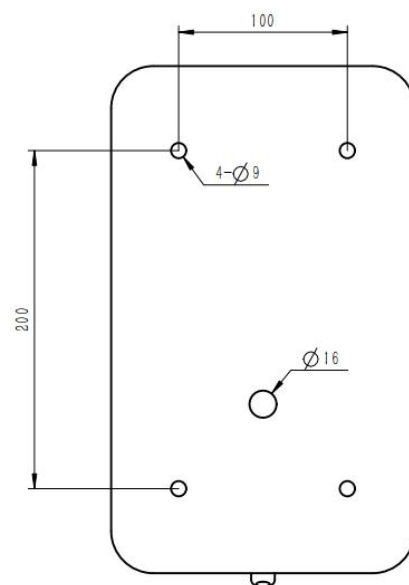
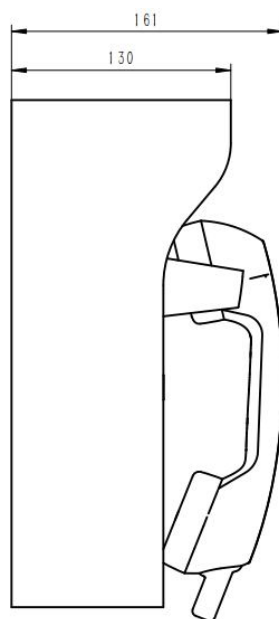
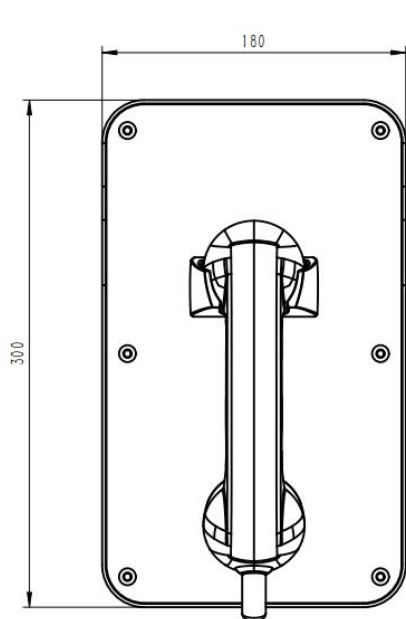


Bank



School

DIMENSIONS



Package	
Unit size	300*180*130 (mm)
Shipping dimensions	340*240*180 (mm)
Packaging materials	Foam padding, carton
Weight	Net weight: 4 kg / Gross weight: 5 kg

