



Vandal Resistant Telephone

- Robust cold-rolled steel housing
- Protection level IP65
- Advanced noise reduction technology for HD calls
- Corrosion-resistant hardware
- CE, FCC, RoHS, IK10, IP65, ISO9001 standards

IP65



IK10

HD

MAIN FEATURES

Housed in a corrosion-resistant stainless steel/cold-rolled steel box and manufactured to a high standard, these telephones offer increased resistance to vandalism, and ensure that the primary function of communication is maintained at all times.

Housing has a grounding device and is completely electrically isolated from the internal circuit, with a certain electromagnetic shielding effect, and the voice is clear and loud during the call, without whistling back. Armored "cord" provides additional resistance to vandalism or heavy industrial use.

The series telephones are designed to meet the needs of clients who experience losses due to vandalism. Ideal for parking lots, prisons, airports, railway, metro, ATMs machines, platforms, hospitals, police stations, shopping mall, stadiums, etc.

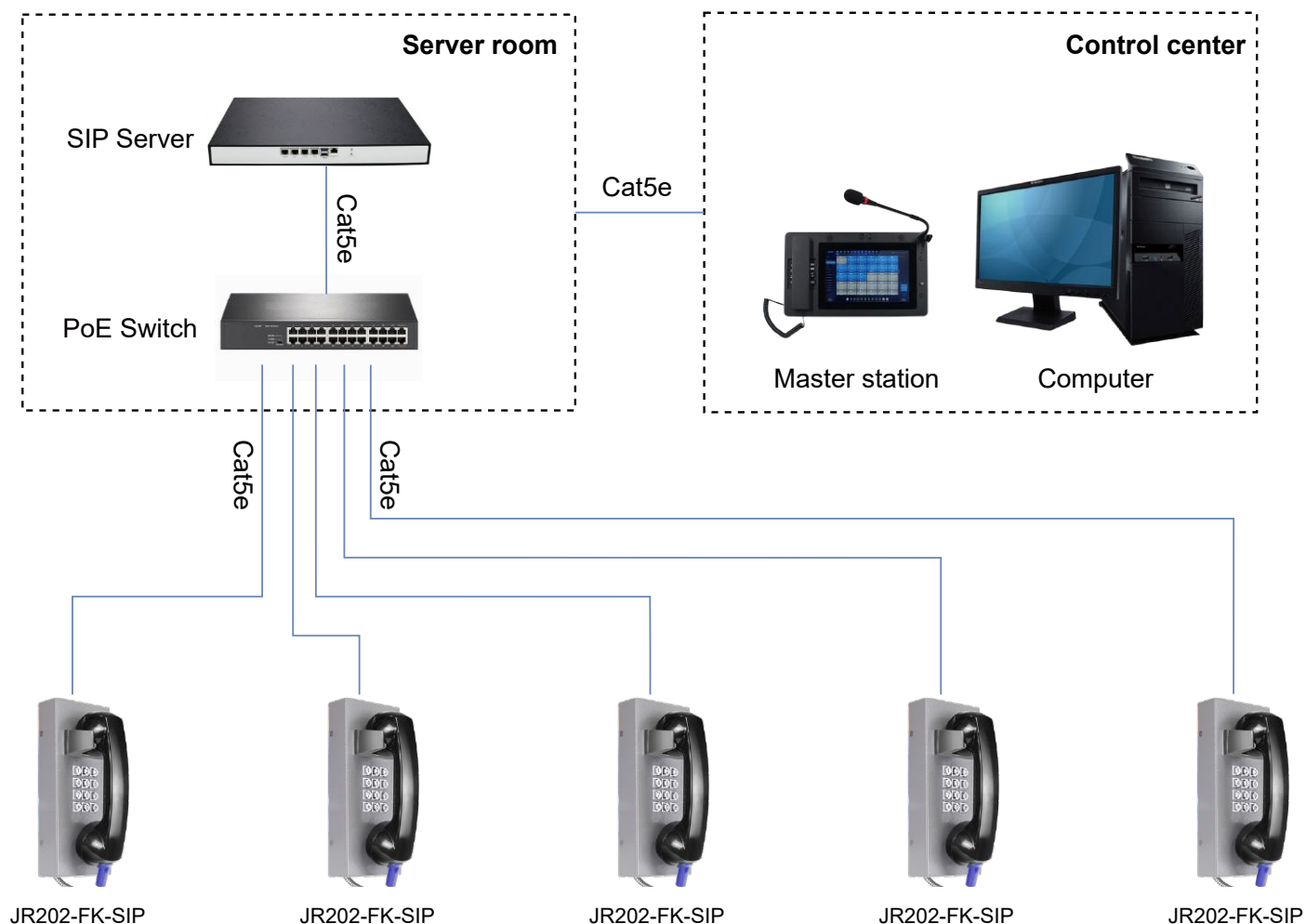
- Full metal keypad (12keys)
- ABS material handset with noise-cancelling microphone and 83 cm armored cord
- The handset supports hearing aid compatibility (HAC)
- Magnetic reed hook-switch
- Grey; other colors available upon special request
- Wall-mounted design, simple installation

TECHNICAL SPECIFICATIONS

| SIP Specifications | |
|---|---|
| Power supply | PoE powered or 12V DC powered |
| Power adapter | 100~240VAC 50~60Hz / 12V DC |
| Power consumption | Idle 1W / Working 2.4W |
| SIP protocol | SIP 2.0 (RFC3261) |
| Network port parameters | WAN Port: 10/100Base- T RJ-45 for LAN, Auto MDIX, LAN Port: 10/100Base- T RJ-45 for PC, Auto MDIX |
| Voice coders | G.711 A/U, G.722 8000/16000, G.723, G.729 |
| Communication mode | Full duplex |
| Ringing volume | 90~95 dB (A) @ 1 meter |
| Technical Specifications | |
| Compatible with most SIP-based IP-PBX servers that comply with SIP RFC 3261 | |
| PoE 802.3af enabled (Power-over-Ethernet) or alternate power source | |
| PoE power supply, supports connecting the external loudspeakers (No external power supply needed) | |
| Supports automatic dialing with delay after picking up the phone, and 4 groups of sequential calling | |
| Supports automatic switching between primary and backup servers | |
| Supports remote Telnet debugging | |
| Supports two relays to remotely control external devices | |
| Operating temperature -40°C to 65°C / Storage temperature -40°C to 75°C | |
| M.T.B.F. exceeds 50,000 hours under normal operating conditions | |
| Network Web Management | |
| Fully configurable through any internet browser | |
| Static IP address provisioning or DHCP support | |
| Product self-diagnostic testing available through the web interface | |
| Network-adjustable earpiece volume and microphone sensitivity | |
| Firmware upload via web interface | |
| Echo cancellation: Supports G.168, and hands-free can support 96ms | |
| Supports SIP domain, SIP authentication (none, basic, MD5), and DNS name of server | |
| DTMF: SIPINFO, INBAND, RFC2833 | |
| Dials Plan: Flexible dial-up configuration, support hotline | |
| Network Features | |
| WAN/LAN: Supports Bridge mode | |
| Supports static IP address | |
| Supports DHCP to obtain an IP address on WAN port | |
| Supports VLAN | |
| Supports web config | |
| Data Protocols: IPv4, TCP, UDP, ICMP, ARP, RTP, SRTP, ONVIF, SNMPv1, RTCP-XR, 802.1x, Static IP/DHCP IP Assignment, IEEE 802.1p/Q, QoS/ToS, HTTP/HTTPS/DHCP, NTP, FTP/TFTP, CDP/LLDP VLAN Configuration, LDAP | |

APPLICATION

IP telephony system is an efficient and convenient communication solution that uses Internet connection to implement voice calls and other communication services. Compared with traditional telephone systems, IP telephone system has higher efficiency and convenience.



OPTIONAL ACCESSORIES



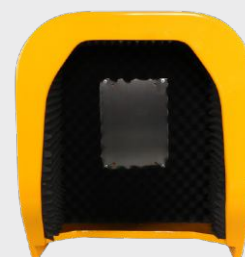
JR-BS-01
Acousto-optical Alarm



JR-LP-02
LED Beacon Light



JR-HSA-10/20/25/30/35
Broadcast Horn



JR-TH-01
Acoustic Hood

APPLICATION SCENARIOS



Metro



Airport



Bus station



Business center



Prison



Hospital

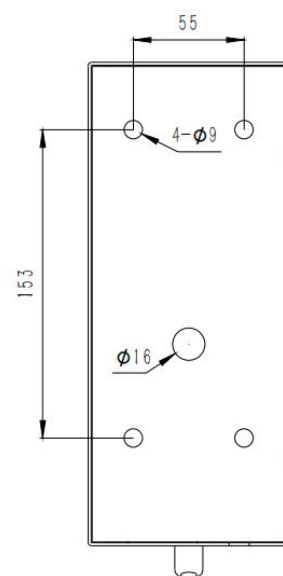
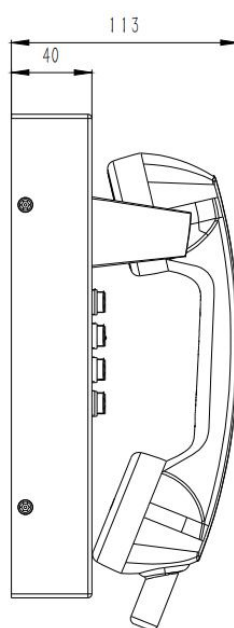
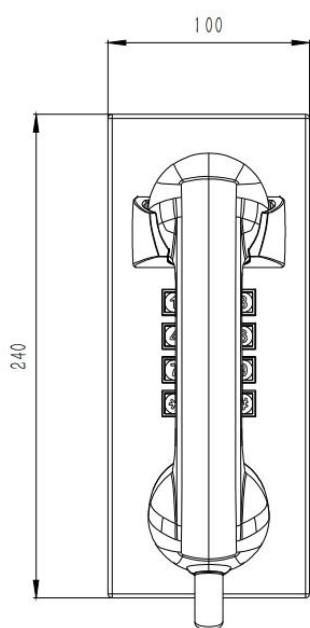


Bank



School

DIMENSIONS



| Package | |
|---------------------|---------------------------------------|
| Unit size | 240*100*113 (mm) |
| Shipping dimensions | 340*220*165 (mm) |
| Packaging materials | Foam padding, carton |
| Weight | Net weight: 3 kg / Gross weight: 4 kg |

