



Vandal Resistant Telephone

- Robust cold-rolled steel housing
- Protection level IP65
- Advanced noise reduction technology for HD calls
- Corrosion-resistant hardware
- CE, FCC, RoHS, IK10, IP65, ISO9001 standards

IP65



IK10

HD

MAIN FEATURES

Housed in a corrosion-resistant stainless steel/cold-rolled steel box and manufactured to a high standard, these telephones offer increased resistance to vandalism, and ensure that the primary function of communication is maintained at all times.

Housing has a grounding device and is completely electrically isolated from the internal circuit, with a certain electromagnetic shielding effect, and the voice is clear and loud during the call, without whistling back. Armored "cord" provides additional resistance to vandalism or heavy industrial use.

The series telephones are designed to meet the needs of clients who experience losses due to vandalism. Ideal for parking lots, prisons, airports, railway, metro, ATMs machines, platforms, hospitals, police stations, shopping mall, stadiums, etc.

- Hotline telephone without keypad
- ABS material handset with noise-cancelling microphone and 83 cm armored cord
- The handset supports hearing aid compatibility (HAC)
- Magnetic reed hook-switch
- Grey; other colors available upon special request
- Wall-mounted design, simple installation

TECHNICAL SPECIFICATIONS

| Analog Specification | |
|---|---|
| Power supply | Drawn from telephone line |
| Operating voltage | 24 VDC to 65 VDC |
| Operating current | 20 mA DC to 100 mA DC |
| Ringer operating voltage | 48 VAC to 90 VAC (calling frequency 21 to 54 Hz) |
| Ringing volume | 80 dB (A) @ 1 meter |
| Dialing method | PD or DTMF mode can be set via the menu. DTMF mode in accordance with ITU-T recommendation Q.23 |
| Lightning / Transients | Protection to ITU-T K.21 enhanced levels |
| Programming | It can be programmed remotely via DTMF tones or the keypad |
| Technical Specifications | |
| Compatible with all the standard PABX systems | |
| Remote programming allows you to manage your network from a central location | |
| Programmable auto hang-up timer | |
| Supports automatic dialing with delay after picking up the phone | |
| Supports scheduled dialing to the central control phone to detect whether the phone is working properly | |
| Supports one relay to remotely control external devices | |
| Can be adapted according to the model of the Analog PABX to support the sequential calling function | |
| Phone line powered | |
| Operating temperature -40°C to 65°C / Storage temperature -40°C to 75°C | |
| M.T.B.F. exceeds 50,000 hours under normal operating conditions | |

OPTIONAL ACCESSORIES



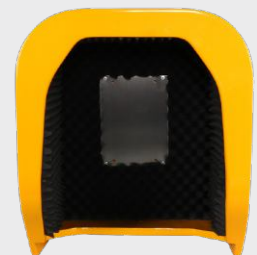
JR-BS-01
Acousto-optical Alarm



JR-LP-02
LED Beacon Light



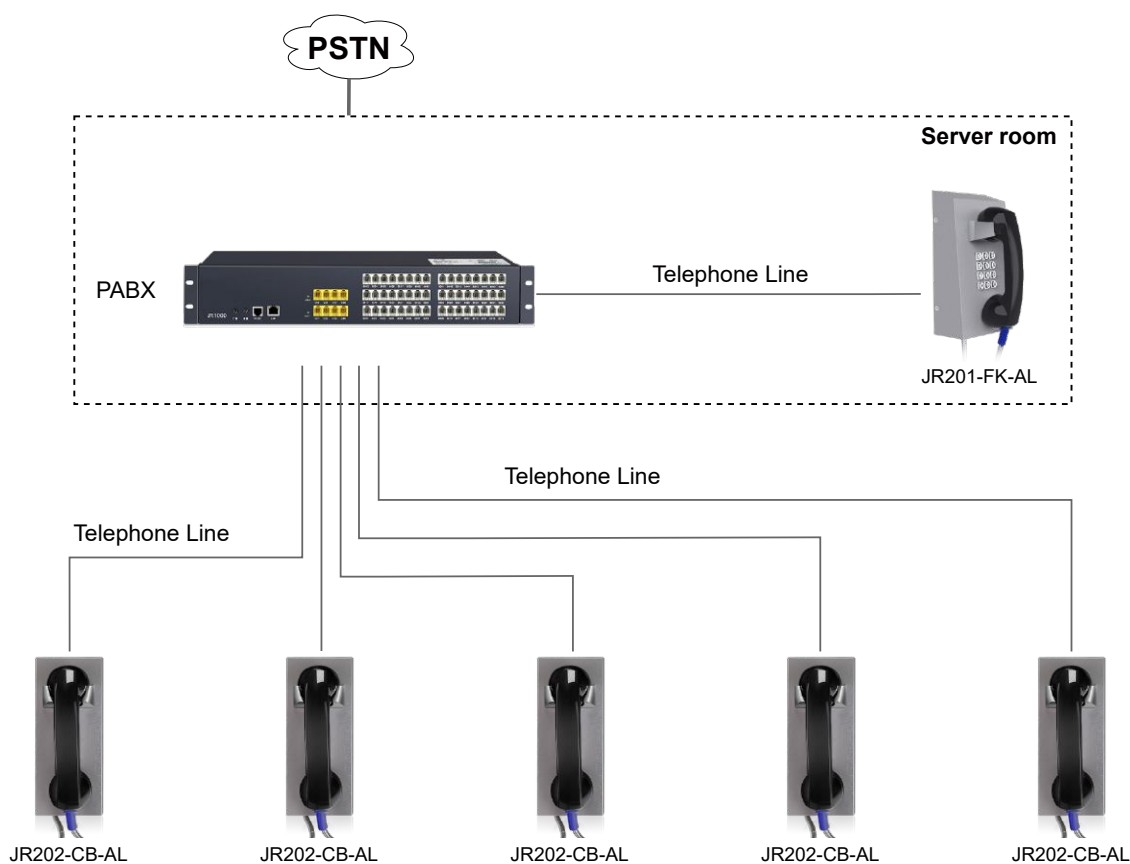
JR-HSA-10/20/25/30/35
Broadcast Horn



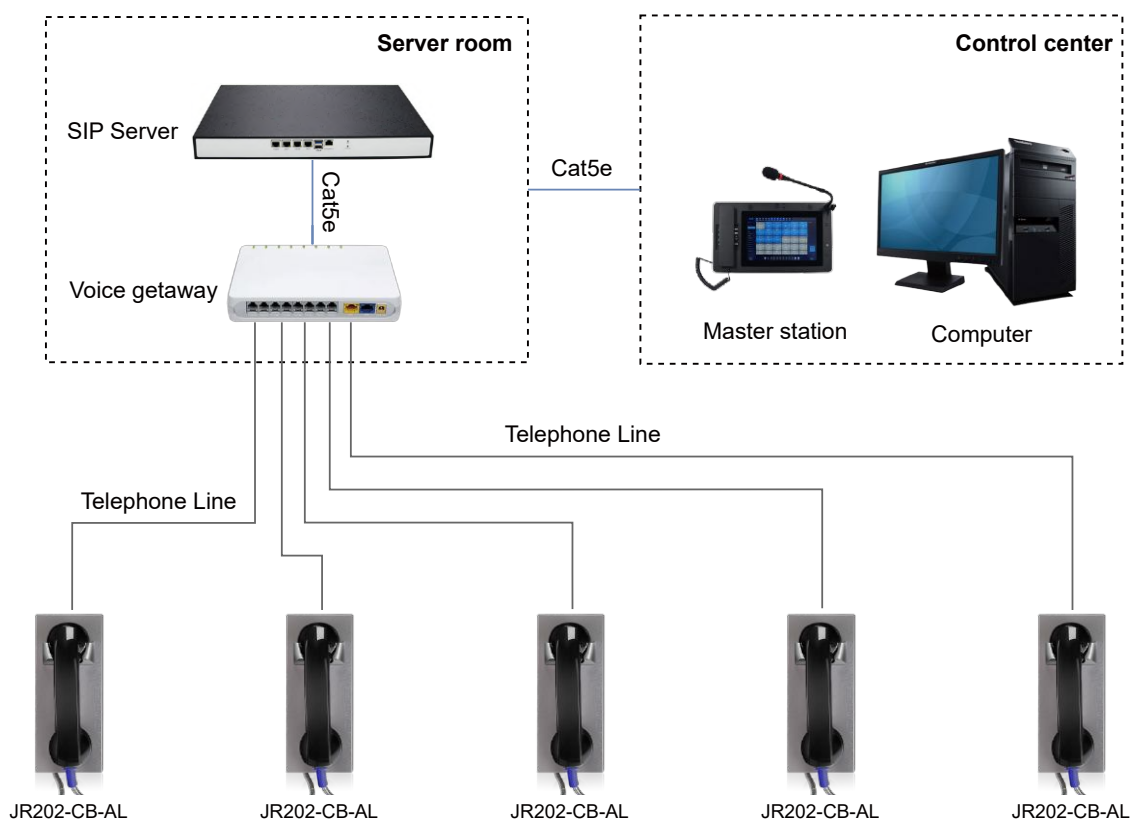
JR-TH-01
Acoustic Hood

APPLICATIONS

- 1 Analog telephone connects to the PABX and call outside lines through the PSTN.



- 2 Analog telephone connects to voice gateway, converts analog signal to SIP signal, and is applied in SIP-based systems.



APPLICATION SCENARIOS



Metro



Airport



Bus station



Business center



Prison



Hospital

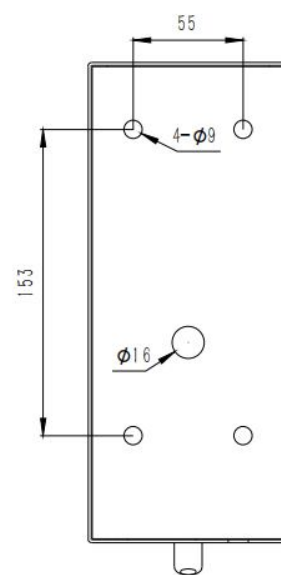
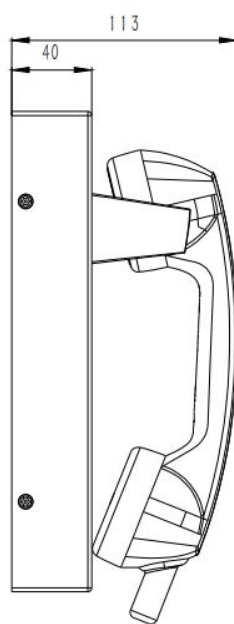
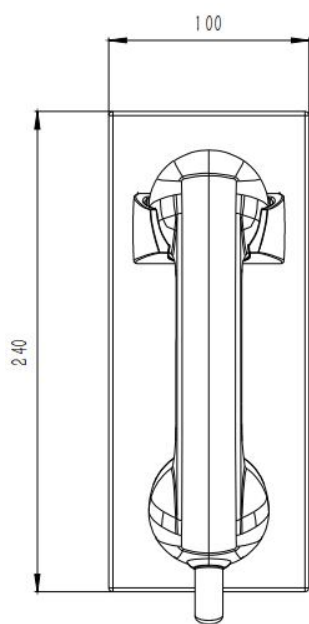


Bank



School

DIMENSIONS



| Package | |
|---------------------|---------------------------------------|
| Unit size | 240*100*113 (mm) |
| Shipping dimensions | 340*220*165 (mm) |
| Packaging materials | Foam padding, carton |
| Weight | Net weight: 3 kg / Gross weight: 4 kg |

