

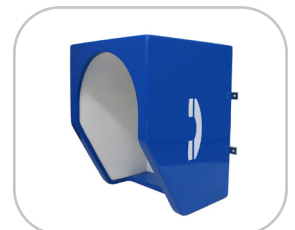
# ACOUSTIC HOOD



## MAIN FEATURES

The JR-TH series Acoustic Hood, molded from glass fiber reinforced plastics (SMC), combines aesthetic appeal with exceptional durability to withstand noise, impact, freezing temperatures, corrosion, high heat, and flames. It is ideal for high-noise environments, including high-noise environments including ships, offshore platforms, power plants, substations, and petrochemical facilities with up to 25dB noise reduction.

- Suitable for indoor/outdoor use, waterproof, dustproof, and UV-resistant
- SMC construction for high strength and impact resistance
- 3 mm white perforated polypropylene acoustic lining
- Interior space supports phone installation (max load: 30kg)
- Wall-mounted via two SUS304 mounting brackets
- Available colors: yellow, orange, red, or blue (other colors/dimensions upon request)



## SPECIFICATIONS

Shell Material	SMC fiberglass enclosure with automotive-grade outdoor paint finish
Acoustic Layer	3 mm white perforated polypropylene lining ( $\approx 25\text{dB}$ noise reduction)
Back Panel Material	SUS304
Mounting Brackets Material	SUS304
Dimensions	900 x 700 x 620mm (H x W x D)
Net Weight	38kg
Packaging Size	1030 x 800 x 690mm (H x W x D)
Gross Weight	70kg, wooden case

